

A photograph of a massive ice cave, likely inside a glacier. The ice is a deep, vibrant blue color, with various textures and layers visible. A person is standing in the distance, providing a sense of scale to the enormous size of the cave. The lighting is dramatic, highlighting the intricate details of the ice formations.

*INTERNATIONAL  
POLAR  
FOUNDATION*

*ANNUAL  
REPORT  
2010*



# *Table of contents*

- I. *Foreword*
- II. *The International Polar Foundation  
Bridging the Science-Society Divide*
- III. *Structure of the IPF*
- IV. *Focus of the Year:  
Arctic Futures Symposium*
- V. *Activities of the IPF*
- VI. *The IPF websites*
- VII. *IPF Publications*
- VIII. *Attachments*



# I. Foreword

*“The year 2010, and in particular April, was incredibly important for the International Polar Foundation. Our flagship project, the Princess Elisabeth Station in Antarctica, was completed at the end of the BELARE 2009-2010 expedition, with all its systems now up and running. The station, which was designed and built by the IPF, is well on the way to living up to the “zero emission” expectations.*

*During a ceremony in Brussels in April with the Minister of Science Policy, Mrs Sabine Laruelle, the IPF donated the station to the Belgian Federal State, thus marking the beginning of its management by the newly formed Belgian Polar Secretariat (BPS). Following the event, the joint public-private organization became responsible for the management of all aspects related to the Princess Elisabeth Station. Within the framework of the newly established entity, the IPF was mandated as the Antarctic Operator responsible for all Antarctic logistics as well as the maintenance and upgrades of the Antarctic research station. I will be heading the BPS as Chair of the Strategic Council for a first term of five years.*

*While the Princess Elisabeth Station served as a hub to various international science expeditions since the beginning of the project, its completion in 2009 is a milestone for Belgium and a major contribution to the 2007-2008 International Polar Year. With the completion of this special project, the IPF is now looking ahead to many more successful scientific seasons.*

*Another exciting event in 2010 was the invitation to be present at the World Expo 2010 in Shanghai. The Princess Elisabeth Station was featured as one of Belgium’s premier international projects in the EU-Belgium pavilion, and presented a specially designed Ice Cube for the event. Designed by Atelier Brückner, the Ice Cube represented an iceberg divided by a crevasse. Each of the two blocks featured a flagship project of the IPF – the Princess Elisabeth Station and the Polaris Climate Change Observatory.*

*Bringing further attention to the Earth’s Polar Regions, the IPF also held the first “Arctic Futures Symposium” at the EU Parliament in Brussels. The event, organized in conjunction with the Prince Albert II of Monaco Foundation and the Aspen Institute, with the support of The Greens, gathered experts and Arctic stakeholders from all over the world to have an open dialogue on the various issues facing the Arctic – from economic to environmental, scientific to political – with a view to identifying possible paths for sustainable development and future management of the high North.*

*2010 was a monumental year for the IPF, and we continue to plan big things for the future, with work now beginning in earnest on our next major project, the Polaris Climate Change Observatory.”*



Alain Hubert, President of the Board of Directors of the IPF

## II. The International Polar Foundation Bridging the Science-Society Divide

*The International Polar Foundation (IPF) was created with the aim of providing a novel interface between science and society, and was recognized by Belgian Royal Statute as a public utility foundation in 2002. The IPF seeks to bring about a keener appreciation of the role of science, and in particular scientific research in the Polar Regions, through a re-examination of the World, its interlinkages, its fragility and the impact of human actions on the environment and the evolution of millennial climate cycles.*

*As we advance through the 21st century, the need to find coherent responses to the questions which concern our relationship with the Earth becomes more urgent. The impact of human activities on the finite, fragile biosphere on which we depend for survival has been such that natural cycles are perturbed.*

*Researchers in the Polar Regions have been actively trying to fill gaps in knowledge to address the uncertainties surrounding the pace, magnitude and direction of change related to global warming. After painstaking research on the polar ice caps of Antarctica and Greenland, evidence was yielded that finally established the causal link between human related carbon dioxide emissions, mean surface temperature, and climate change. Accelerated warming could unlock the billions of tons of fresh water held in these same ice caps, causing sea levels to rise.*

*The Arctic sea ice, too, has a dual function. Being particularly sensitive to warming trends on the planet, it is an early warning system and a reflective shield that keeps in check any acceleration of the warming process.*

*In light of the important role of the Poles in regulating the heat balance of the Earth, it has become crucial that the scientific effort to understand the mechanisms be sustained and the latest scientific findings be brought into the public domain. To this end, the International Polar Foundation (IPF) has set out to support the efforts of the international scientific community by providing new tools for the dissemination of research findings to the wider public, and by leveraging support for research infrastructure and activities.*

### Our mission

#### Inform...

*the wider public on the importance of polar research in understanding how the Earth's climate functions as a complex and unified system, and disseminate the results of research on the Polar Regions and on climate change.*

#### Educate ...

*by offering to the educational community the tools and resources necessary for efficiently communicating complex ideas through, inter alia, stimulating classroom debate and interaction*

#### Demonstrate ...

*by providing examples of best practice with respect to the means for addressing the causes and adapting to the effects of climate change, through exemplary sustainable development initiatives.*

# III. Structure of the IPF

## *Members Of Board IPF* Brussels, Belgium

*Alain Hubert - Founder - Chairman of the Board of Directors  
Explorer, Emeritus Writer, Civil Engineer, Mountain Guide*

*André Berger - Founder  
Climatologist, Emeritus Professor at the Université Catholique de Louvain (Belgium) and former President of the European Geophysical Society*

*Hugo Declair - Founder  
Glaciologist, Emeritus Professor at the Vrije Universiteit Brussel (Belgium)*

*Jacques Brassinne de la Buissière – Vice-President IPF  
President of the Brussels Museum of Polar History and Exploration*

*N.F.D. Johnson-Amin – Vice-President IPF  
Environmental Chemist, Global Strategies Director*

*François-Xavier Huberlant  
CEO Airpar*

*Philippe Bodson  
Engineer & MBA, Independent Director*

## *Members Of Board IPF-CH* GENEVA, SWITZERLAND

*Laurent Dubois - Managing Director  
Part-time lecturer at the University of Geneva - Education Sciences Department (SSED) – TECFA, teacher trainer in Environmental topics for the Primary Schools of the Geneva canton, and Educational Program Coordinator of the International Polar Foundation*

*Alain Hubert  
Explorer, Writer, Civil Engineer, Mountain Guide  
Management Committee*

*Pierre Dillenbourg  
Teacher in educational science at EPFL (école polytechnique fédérale de Lausanne).*

## *Members Of Board IPF-F* PARIS, FRANCE

*Alain Hubert – President  
Explorer, Writer, Civil Engineer, Mountain Guide*

*Louis De La Roncière – Treasurer  
Corporate Executive*

*N.F.D. Johnson-Amin – Secretary  
Environmental Chemist, Global Strategies Director*

*Arnaud Tortel – Director  
Explorer*

## *Trustees IPF-UK* MATLOCK, UK

*Sir Andrew Burns- Chairman  
International Governor of the BBC and former British High Commissioner to Canada*

*Stephen Cox CVO  
Executive Secretary of the Royal Society*

*Meredith Hooper- Hon Treasurer  
Science writer and author of non-fiction books specialised in polar science*

*Prof. David Cope  
Director of the Parliamentary Office of Science and Technology, UK Parliament*

*Alain Hubert  
Explorer, civil engineer, entrepreneur, qualified mountain guide, public speaker, co-founder of the International Polar Foundation*

*N.F.D. Amin  
Environmental Chemist, Global Strategies Director*

## *Members Of Board Polaris Centre Asbl* BRUSSELS, BELGIUM

*Alain Hubert  
President Explorer, Writer, Civil Engineer, Mountain Guide*

*Ms. N.F.D. Johnson-Amin  
IPF Management Committee*

*Ms. Yolande Avontroodt*

*Jean-Marie De Backer*

*Alain De Waele*

*Michel de Wouters*

*Luc Depre*

*Hugo Ferreira*

*Bernard Herman*

*Philippe Maystadt*

*Pierre Pozzi*

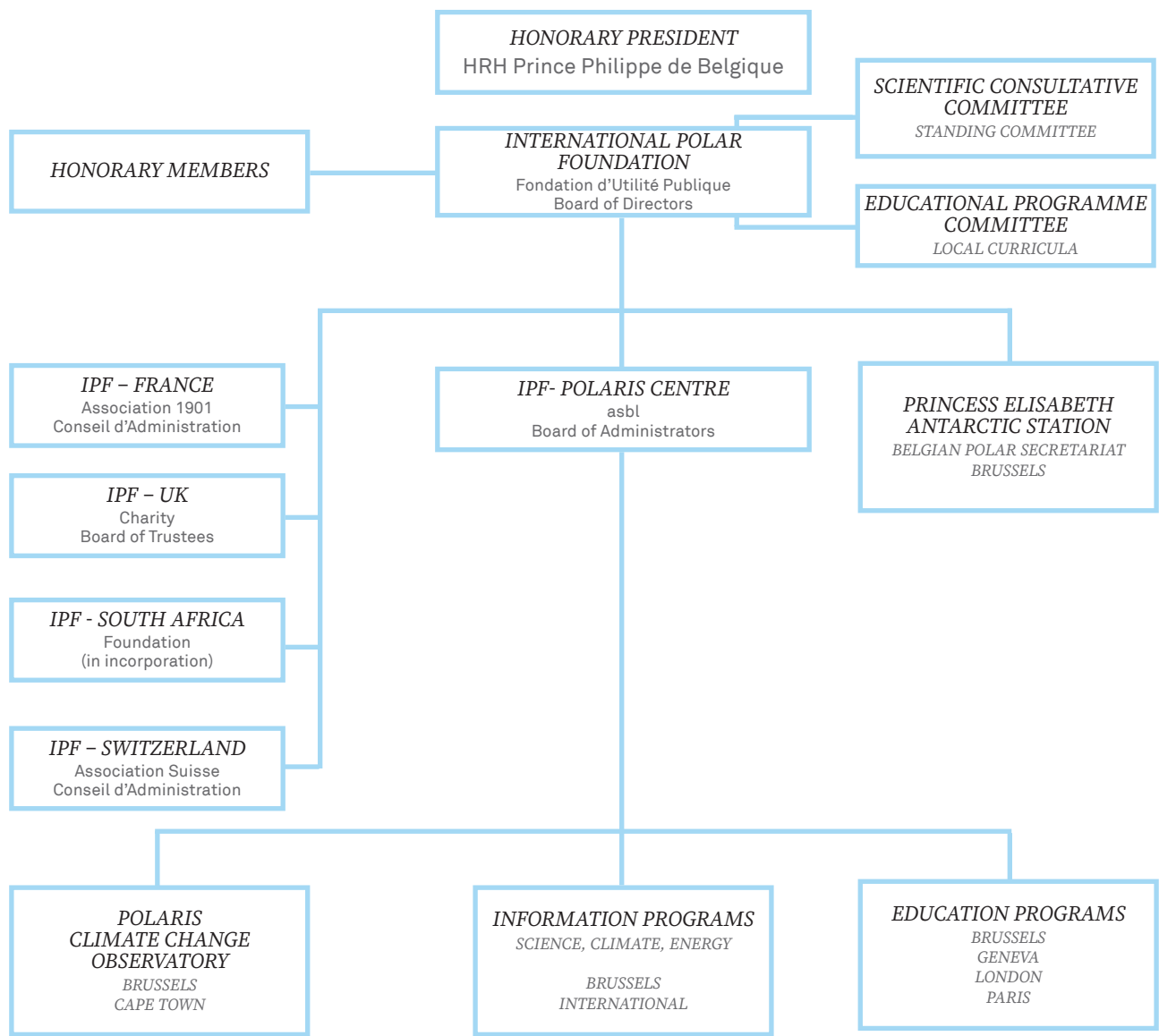
*Marc Speeckaert*

*Henri Tassenoy*

*IPF Management Committee*



# Organization chart



## *IV. Focus of the Year: Arctic Futures Symposium*



*In 2010, the International Polar Foundation (IPF) organized the first “Arctic Futures Symposium” in Brussels, in conjunction with the Prince Albert II of Monaco Foundation (Monaco) and the Aspen Institute (United States), and with the support of the Greens - EFA.*

*From October 14th to 15th, the symposium welcomed various stakeholders from the Arctic to gather and discuss their needs and positions on the future development of the region, while sharing their specialist knowledge of the high north. Over the two days of the symposium, high-level representatives of the Arctic Council countries, the European Union, and others discussed the various paths for development in the Arctic and its future management.*

*“The Arctic”, IPF President Alain Hubert said in his opening speech, “is no longer isolated from the rest of the world and is gaining importance”. After welcoming the various stakeholders to the event, he expressed his hopes of the “Arctic Futures Symposium” contributing to the informal dialogue between the EU and the various Arctic Countries.*

*The Symposium welcomed the various participants in a series of workshops tackling issues across four broad topic themes – governance, economics, environment and science. Speakers gave presentations covering issues like the consequences of shrinking sea ice for the Arctic Basin, the threats and opportunities of pursuing economic activities in a changing Arctic, the existing models for Arctic governance, and the needs of research conducted in the High North.*

*In the opening session of the final day, Isabelle Durant, Vice-President of the European Parliament and member of the Greens / Free Alliance, Herman Van Rompuy, President of the European Council, Maria Damanaki, EU Commissioner for Fisheries and HSH Prince Albert II of Monaco shared their views on the issues that were debated at the symposium and underlined the opportunities and challenges facing the region today and in the future.*

*In the closing session the “rapporteurs” from the different workshops reported on the lively discussions and the conclusions that were drawn, and a final report was produced and is available on the IPF website.*

*Next year, the second “Arctic Futures Symposium” will be held in Brussels, from October 12th to 14th.*

# V. Activities of the IPF

True to its threefold objective to “inform, educate, and understand”, the International Polar Foundation participated in promotion, education and outreach events in Belgium and abroad.

## Antarctica

### BELARE 2010-2011 Season

In early November, the members of the 2010-2011 BELARE (Belgian Antarctic Research) expedition flew to Antarctica to prepare the PEA Station for its first “zero emission” season.

2010-2011 was a science-intensive season, with the BELISSIMA (glaciology) team conducting various measurements at the coast to better understand the interactions between the ocean and the ice at their contact point with the ice shelf. Later in the season, they were followed up by the MICROMETA (Meteoritics), SAMBA (Meteoritics), GIANT/LISSA (Geomorphology), BELATMOS (Meteorology), HYDRANT (Meteorology), and BELDIVA (Microbiology) scientists.

Princess Elisabeth Antarctica is a “zero emission” scientific platform also open to international scientists, and in 2010-2011, several such projects used the station as a hub for their research. Among these were the German BGR (Geology) and DoCo (Geophysics) projects, but also the Japanese scientists that collaborated in Steven Goderis’ Micrometa project (Cosmochemistry) and SAMBA.

In April 2010, Mrs. Sabine Laruelle, Belgian Federal Minister for Science Policy, and Alain Hubert, President of the International Polar Foundation, signed a partnership protocol between the IPF and the Belgian State. The protocol, which marks the official donation of the PEA station to the Belgian State, also mandates the IPF as the Antarctic Operator for the Belgian Polar Secretariat (BPS).

The BPS is the public-private entity responsible for all scientific, operational, financial and administrative matters related to Princess Elisabeth Antarctica in order to conduct scientific research in a safe environment. Its governing body, the strategic council, is presided over by Alain Hubert for a first five-year term.

## Awards and Prizes in 2010

### 2010 Antarctica InBev-Baillet Latour Fellowship Award

On March 22nd, Steven Goderis, a PhD student at the Vrije Universiteit Brussel, became the second laureate of the Antarctica InBev-Baillet Latour Fellowship Award, a yearly €150.000 grant to promote scientific research at or in the vicinity of the Princess Elisabeth Station.

This award, a joint initiative by the InBev Baillet Latour Fund and the IPF, was granted to Dr Goderis for his “Micrometa” project, which aims to study micrometeorites to try to gain better insight into planet formation, as well as the evolution and development of our solar system.

### Energy and Environment Award 2010

In 2010, IPF President Alain Hubert awarded the International Polar Foundation Award to the city of Soignies during the 5th edition of the Energy and Environment Awards. The IPF prize is presented to a candidate whose initiatives have had a beneficial impact in tackling climate change.

The city of Soignies and the CPAS of Soignies were awarded the prize for creating the non-profit local entity FRCE (Fonds de Réduction du Coût global de l’Energie) to reduce the global cost of energy, which aims to reduce the water and energy consumption in their city in the long term.

## Conferences

### *2010 Sibos Financial Conference in Amsterdam - From Sibos to the Future*

*A participant in the 2009 Sibos event in Hong Kong, the IPF was invited to attend the 2010 Sibos financial conference in Amsterdam by organizer and long-time partner, SWIFT. As part of a continuing partnership, the IPF worked closely with SWIFT to make the event as green as possible through a series of fact and action sheets with guidelines on the various aspects of the organization of an international conference.*

*IPF Executive Director Thierry Touchais facilitated sessions entitled “Sustainability: Doing Good Is Good for Business” to engage the financial community in sustainable actions and “The Long Now”, a session on the state of the world in 2080. The financial community has a large potential leverage through its operations, and even more so through its investments to contribute to sustainable developments, and the IPF is working with many banks and investors through its partnership with SWIFT to change practices and works towards a more sustainable industry in the future. This is coherent with the EU Environment Action Programme seeking to support environmental integration in the financial sector.*

### *International Polar Year Oslo Science Conference*

*In June, the Norway Convention Centre in Oslo welcomed about 2,300 scientists, policymakers, teachers and students for the IPY Oslo Science Conference. The conference was the largest ever gathering of the polar and IPY research community, and allowed participants to exchange ideas and meet potential international partners.*

#### *Education & Outreach*

*A teacher’s conference was also organized and was attended by two members of the IPF education team: Sandra Vanhove (head of IPF’s education team) and Mieke Sterken. As an organizer to the conference, Sandra Vanhove led workshops on measuring albedo, while Mieke Sterken attended the official launch of the Polar Resources Book, an educational resource book which features various IPF classroom activities and project stories.*

#### *Communications, Science & Networking*

*Jean de Pomereu and Joseph Cheek, from the IPF Communications Team also participated in the conference. Jean chaired a session entitled ‘IPY in the Media’ and took part in the IPY legacy workshop, while Joseph gave a successful presentation on the media coverage of the Princess Elisabeth Station.*

*The next IPY meeting will be held in 2012 in Montreal (Canada), where the IPF has been invited to convene a session. The event, which will be held from April 22nd to 27th, will be one of the largest and most important scientific conferences for polar science and climate change, impacts and adaptation, and the last of its type as a legacy of the IPY.*

## Education

### *Alain Hubert at ICHEC Brussels Management School*

*Among the various programmes they organize, Brussels Management School ICHEC features a Sustainable Management Degree. This programme involves a lecture by IPF President Alain Hubert on the scientific background and data as base of climate understanding, and on the key challenges resulting from climate change.*

### *CAREX Summer School*

*In July, 40 young scientists gathered in Pieve Tesino (Italy) for a Summer School on ‘Life in Extreme Environments’ organised by CAREX (Coordinated Action for Research Activities on life in Extreme Environments). The summer school saw several researchers give lectures and share their experience with the attending students.*

*Amongst the participants was Mieke Sterken, educational officer at IPF, who gave a talk about the Princess Elisabeth Station in Antarctica, and presented a poster on diatom and pigment based reconstructions of Antarctic climate and sea-ice conditions.*

## *Class Zero Emission (CZE)*

*Class Zero Emission, the pedagogical workshop developed by the International Polar Foundation, started another year with a series of new workshops dedicated to teacher students. The various workshops each tackled one theme with a special host:*

- *Climate Change: André Berger (Climatologist - UCL)*
- *Polar Regions and Science: Jean-Jacques Derwael (Expert Geometer and Antarctic Expeditions Veteran)*
- *Energy: Johan Berte (Project Manager of the Princess Elisabeth Station)*

*These dedicated sessions were welcomed with great success by the various attendees, with 31 teacher students from Wallonia, and 45 from Flanders.*

*Besides the additional workshops, the CZE laboratory welcomed three new experiments on ocean acidification, the thermohaline circulation, and the melting of the ice. Further improvements have been scheduled for the 2010-2011 school year.*

*Over the course of 2010, the Class Zero Emission workshops welcomed a total of 640 students from primary and secondary schools, divided over 35 workshops. The reduced attendance in comparison with the year 2009 can be explained by the cancellation of 29 scheduled animations following the closure of CZE to Flemish classes on January 5th, 2010.*

*Receiving various requests from high schools in both communities, the International Polar Foundation organized workshops adapted to the pedagogical needs of the students toward a teaching career. In total, 9 workshops were organized for Flemish high school, and 4 for Walloon high schools.*



## *Polar Quest: A Contest for Flemish High School Juniors*

*Polar Quest is the latest educational project of the IPF, supported by the “Actieplan Wetenschapscommunicatie” of the Flemish Government. The aim of the contest is to inform students of the challenges and importance of scientific research in the Polar Regions, with particular focus on the Belgian Princess Elisabeth Station in Antarctica. While down in Antarctica, the winning teacher will conduct his/her own project while communicating back on the science conducted at PEA during the 2011-2012 BELARE expedition.*

*The contest was opened to all Flemish classes in the 5th grade of secondary school (16-17 years old) in September 2010, at the beginning of the school year. The launch was a success, and 31 classes took on the first challenge of directing a short movie on “The weather in Utsteinen in 2050”.*



The deadline for the entries was put in January 2011. The jury will then deliberate and select five candidates to be presented to the broader public for a popularity poll that will select the three finalists.

## Events

### *Forum International de la Météo (France)*

From October 21st to 24th, the International Polar Foundation participated in the 2010 Forum International de la Météo held in Paris (France). IPF's Nathalie Van Isacker, Laurence Vanlede and Emmanuelle Driesschaert taught the participating students some basics on the Arctic and Antarctic with the IPF's 3D puzzles.

The forum became a success, with 8063 visitors over four days, including 1479 students over the two days that were dedicated to schools.

### *CryoSat-2 Launch in Darmstadt (Germany)*

In April, IPF Executive Director Thierry Touchais was invited by the European Space Agency (ESA) to give one of the keynote speeches at the launching event of CryoSat-2 in Darmstadt (Germany). Back in 2007, Alain Hubert took snow depth measurements during his "Arctic Arc expedition" to collect precious data that contributed significantly to the validation of the CryoSat-2 mission for which the satellite was launched from Baikonur (Kazakhstan).

### *Schneider Electric VIP Event in Ostend (Belgium)*

The IPF participated in an international VIP Event held in Ostend (Belgium) by PEA Founding Partner Schneider Electric. The company, consistent with its corporate strategy and EU's priority area in promoting energy efficiency, contributed to develop and install the energy management solutions at the Princess Elisabeth Station and continues to oversee the functioning of the station's smart grid every season. The event featured a movie on the experience of Jean Chalon and Wim Van Belle, the two engineers who joined the crew at the PEA to implement the station's smart grid. IPF President Alain Hubert outlined the development of the research station project since its inauguration at Tours & Taxi in September 2007.

### *World Environment Day in Geneva (Switzerland)*

In June 2010, IPF-Switzerland was invited to participate in the World Environment Day Event organised by the United Nations in Geneva (Switzerland).

The event was organised by the United Nations Office in Geneva in collaboration with the United Nations Environment Program (UNEP) and the Geneva Environmental Network (GEN) and was dedicated to Biodiversity. IPF-Switzerland had a stand and presented different IPF educational tools covering the theme.

### *Informal Meeting of the EU Research Ministers (Belgium)*

In July, the Belgian Presidency of the European Union held an Informal Meeting of the EU Research Ministers in Tour & Taxis (Brussels). The International Polar Foundation participated in the event with a stand on the Princess Elisabeth Station in Antarctica.

### *"Nuit de la Science" in Geneva (Switzerland)*

In July, IPF-Switzerland participated in the 8th edition of "La Nuit de la Science" in Geneva. The event organised every two years by the "Musée d'histoire des sciences" aims to create a link between science, the scientists and the public and the theme for 2010 was "Extreme and Limits". At the event, the IPF presented an exhibition on the poles and climate change based on the Class Zero Emission workshop.

## Exhibitions



### *Shanghai 2010 World Expo*

*From May to October this year, the International Polar Foundation (IPF) was featured in the Belgium-EU Pavilion in Shanghai (China) for the 2010 World Expo, held under the motto “Better City, Better Life”. The exhibition, which put a large focus on CO<sub>2</sub> emissions in housing and transportation, showed that changing our habits and rethinking our relationship with energy might open the path to more sustainable living.*

*The “Ice Cube” – the IPF’s specific exhibit - was developed for the occasion by designers Atelier Brückner (Germany). The structure was built with the support of the Belgian Commissariat of the Shanghai 2010 World Expo, GDF Suez, Schneider Electric and AGC Glass, and was an iceberg-like structure cut in half by a real-ice crevasse visitors could walk through. Each half presented a project of the IPF: the Princess Elisabeth Station in Antarctica, and the Polaris Climate Change Observatory.*

*Throughout the Expo, the IPF also participated in events such as a week dedicated to the Chinese-Belgian science partnership, including a Polar Day. Various links were established with other pavilions in which science and the Polar Regions were featured, such as the World Meteorological Organization’s MeteoWorld.*

### *Mondial de l’Automobile 2010 in Paris*

*In October, the IPF and Monegasque car manufacturer Venturi presented their prototype for the “Venturi Antarctica”. Developed in partnership with the Prince Albert II of Monaco Foundation, this electric vehicle will be used at the Princess Elisabeth Station to carry scientists and their instruments into the field.*

*Consistent with the EU objective to reduce greenhouse gas emissions in the transport sector, and in an effort to pursue the “zero emission” concept from building to mobility, the high-tech “Venturi Antarctica” was conceived to function in synergy with the Princess Elisabeth Station’s smart grid as far as leaving as small a footprint as possible. Designed for use in temperatures down to -50°C, the vehicle will be directed by “joysticks” for greater precision. Weighing only 1.200kg, the “Venturi Antarctica” is extremely light for a working vehicle, and has the ability to transport up to one ton of staff and materials over 150km at a maximum speed of 40km/h. The aim is to hand over a finalised version of the vehicle to the PEA crew for the 2012-2013 BELARE season.*

# VI. The IPF Websites

## [Polarfoundation.org](http://Polarfoundation.org)

*Polarfoundation.org is the International Polar Foundation's main website. The website, which is dedicated to communication on the various IPF initiatives, projects, and events, fulfills the IPF's mission as a bridge between science and society.*

*Polarfoundation.org is directed towards the general public and features movies, flash animations, picture galleries, news items, press releases, and a calendar of events to bring about a keener understanding of the International Polar Foundation's objectives.*

## [Sciencepoles.org](http://Sciencepoles.org)

*Dedicated to science, the International Polar Foundation's Sciencepoles.org serves as a unique platform for polar research institutions and scientists to communicate on their research. Through scientific vulgarization, the website contributes significantly to the IPF's role as a bridge between science and society.*

*Targeting policy makers as well as the general public, Sciencepoles.org features:*

- daily news updates on recent findings and publications,*
- in-depth interviews with prominent members of the polar researchers' community,*
- feature galleries on polar environments and research,*
- picture galleries of polar landscapes, logistics, and scientific fieldwork,*
- a detailed calendar of polar research-related events.*

## [Educapoles.org](http://Educapoles.org)

*Educapoles.org is a website that helps the International Polar Foundation to achieve one of its three key missions: educate. The website, which brings together the IPF's educational and multimedia tools, has the mission to inform the teachers' community, raise awareness of the poles' importance as an early warning system and unique laboratory, and mobilize people by providing the means for them to take action in full knowledge of their implications.*

*Targeted at teachers, future teachers, and all actors involved in education, Educapoles.org offers pedagogical dossiers, flash animations, videos, picture galleries, tales and ready-made contents such as quizzes, scientific experiments, and classroom activities.*

## [Explorapoles.org](http://Explorapoles.org)

*Dedicated to Arctic and Antarctic expeditions, Explorapoles.org uses polar adventures as a means to bring people, and especially younger people's attention to the environmental fate of the Earth and the evolution of the Polar Regions.*

*Following polar expeditions in the Arctic (from mid-February until the end of June) and the Antarctic (from mid-November until the end of February), Explorapoles.org has already covered hundreds of expeditions and features an updated listing of polar explorers.*

## [Antarcticstation.org](http://Antarcticstation.org)

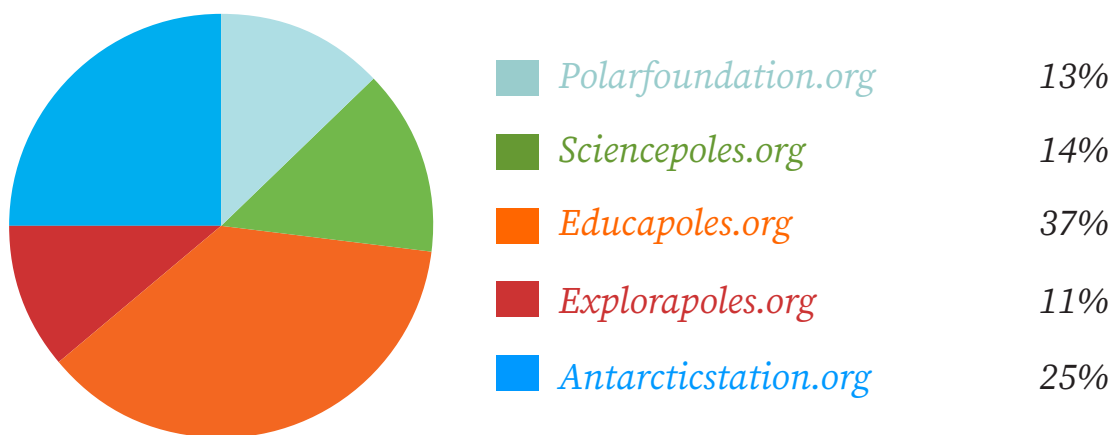
*Antarcticstation.org is dedicated to the International Polar Foundation's flagship project: the Princess Elisabeth Station in Antarctica. The website offers the general public the opportunity to keep in touch with the news and events on Utsteinen Ridge, in Queen Maud Land.*

*Besides the regular news updates and picture galleries (during the season), Antarcticstation.org features videos, general information on the project, as well as interviews with team members.*



## Website statistics

### Percentage of website visits in 2010



Total of visitors: 262 767

### Top ten countries in the 2010 website visits

1.	<i>Belgium</i>	27%
2.	<i>France</i>	20%
3.	<i>United States</i>	15%
4.	<i>United Kingdom</i>	5%
5.	<i>Canada</i>	5%
6.	<i>Netherlands</i>	3%
7.	<i>Italy</i>	3%
8.	<i>Australia</i>	2%
9.	<i>Germany</i>	2%
10.	<i>Switzerland</i>	2%
	<i>Other countries</i>	18%

# VII. IPF Publications

In 2010, just as in previous years, the International Polar Foundation published a wide selection of documents. While the detailed list of the website publications is included in the attachments of the present annual report, the basic outline of the website publications goes as follows:

- Sciencepoles.org: 15 various interviews and scientific articles
- Educapoles.org: 7 fact sheets and 4 pedagogical tales



## Fact Sheets

Within the framework of the interactive workshop ‘Class Zero Emission’, the IPF’s educational team produced several educational and pedagogical tools for teachers to either prepare or continue the “Class Zero Emission” experience in class.

The fact sheets cover subjects like Fisheries in the Arctic and Antarctic, persistent pollutants in the Polar Regions, and the geopolitical status of the Arctic and the Antarctic.

# VIII. Attachments

## Sciencepoles Publications

### Articles and Interviews

- Konrad Steffen: *Greenland Melt and the Complexities of Sea Level Rise* - 10.12.2010
- Vladimir Romanovsky on the *Current State of Permafrost* - 18.11.2010
- Dongmin Jin on *Korea's Polar Ambitions* - 30.09.2010
- *Beyond Oslo: Milestones, Perspectives, and Priorities for International Polar Research* - 13.08.2010
- Marie-Pierre Lardeau: *Vulnerability of Inuit Communities in a Changing Arctic* - 29.07.2010
- Steven Chown: *Winner of the 2009 Martha T. Muse Prize for Science and Policy in Antarctica* - 01.07.2010
- Mark Drinkwater on *CryoSat-2 and its Mission* - 03.06.2010
- Nicolas Epchtein *Talks about Astronomy at Dome C* - 12.05.2010
- ARENA: *Developing a New European Astronomical Observatory at Dome C* - 11.05.2010
- *Princess Elisabeth Antarctica: Changing the Way We Think about Using Energy* - 29.04.2010
- ICED: *Integrating Climate and Ecosystem Dynamics in the Southern Ocean* - 02.04.2010
- *UN Convention on Biological Diversity Secretariat Discusses Ocean Acidification* - 08.03.2010
- Sridhar Anandakrishnan on the *Thwaites Glacier and Using UAVs for Glacier Research* - 18.02.2010
- Kazuyuki Shiraishi on *Belgo-Japanese Cooperation in the Dronning Maud Land* - 27.01.2010
- Robert Bindshadler on *West Antarctica's Pine Island Glacier* - 06.01.2010

## Educapoles Publications

### Educapoles Publications

#### Fact Sheets

- *Fishing in the Arctic and Antarctic: Exploiting Living Resources* - 19.11.2010
- *The new economic stakes of climate change* - 05.11.2010
- *Persistent Pollutants in the Polar Regions* - 29.10.2010
- *Exploitation of Mineral Resources in the Polar Regions* - 15.10.2010
- *The Geopolitical Status of the Arctic and Antarctic* - 01.10.2010
- *Paleoclimatic Exploration in the Arctic & Antarctic* - 17.09.2010
- *Energy: 13 In-Class Activities* - 21.06.2010

#### Pedagogical Tales

- *Balbuzard and the Keys of Knowledge* - 06.09.2010
- *The Earth has a Fever* - 02.02.2010
- *Tears from the Other Side of the World* - 02.02.2010
- *Avalak and the Electric Prince* - 22.01.2010

# Financials 2010

## Consolidated Income Statement Euros

Revenue	5 401 759
Expenses	-5 513 023
Result from activities	<u>-111 265</u>
Excess from Continuing Operations	-54 799
Excess (Deficit) Before Income Tax	-50 841
Excess (Deficit) of the Period	-50 841

## Consolidated Balance Sheet Euros

Non-Current Assets	11 945
Current Assets	6 456 036
Total Assets	<u>6 467 981</u>
Equity	25 000
Retained Earnings	887 414
Accounts Payable	5 555 567
Total Liabilities	<u>6 467 981</u>



