

# INTERNATIONAL POLAR FOUNDATION

ANNUAL  
REPORT  
2019



INTERNATIONAL  
POLAR  
FOUNDATION





# CONTENTS

04	FOREWORD
06	THE INTERNATIONAL POLAR FOUNDATION: CONNECTING SCIENCE AND SOCIETY
07	INTERNATIONAL POLAR FOUNDATION STRUCTURE
07	BOARD MEMBERS AND HONORAY MEMBERS
08	ORGANIZATION CHART
09	CONTACT INFORMATION
10	ACTIVITIES OF THE IPF
10	ANTARCTIC OPERATIONS
15	BAILLET LATOUR ANTARCTICA FELLOWSHIP
16	INTERACT II PROJECT
18	ARCTIC FUTURES SYMPOSIUM 2019
20	ARCTIC SHORTS FILM EVENING AT BOZAR
21	EDUCATION AND OUTREACH
23	ARCTIC PROFESSIONALS NETWORK EVENT
23	BELGIAN ENERGY AND ENVIRONMENT PRIZE
25	ONLINE OUTREACH
25	WEB PRESENCE
26	SOCIAL MEDIA
27	IPF IN THE NEWS
31	FINANCIALS

# FOREWORD

The International Polar Foundation (IPF) continued to consolidate activities related to research in the Arctic and Antarctic in 2019. The IPF continued to set ambitious goals for action to mitigate and address climate change as appreciation of the issues around the world continued to grow.

In 2019, student protesters took to the streets demanding that politicians commit to concrete actions to fight against climate change. They are right to be concerned, as future generations will have to deal with the worst impacts of climate change if no serious actions to mitigate climate change are taken rapidly by those in power.

Through its education and outreach activities, the Foundation continued to inspire young people to follow careers in STEM (Science, Technology, Engineering, Mathematics) subjects, as well as demonstrating what they can do to reduce their environmental footprint. Many online lessons with scientists and experts working at the Princess Elisabeth Antarctica were organized to engage directly with students in Belgium and around the world. In a few decades, today's youth will be the next generation of leaders responsible for finding solutions to the world's problems. Inspiring them to take action and giving them the tools to solve problems is an essential part of ensuring a better future.

The IPF feels that leading by example is the best way to inspire the next generation of leaders. The International Polar Foundation has always had in mind the necessity of training the next generation as it continued to expand the renewable energy and wastewater treatment capacity at the Princess Elisabeth Antarctica. As interest grows for research into renewable solutions at Princess Elisabeth the Station team built additional sleeping quarters in a rebuilt annex to the station. The number of scientists interested in conducting research at the station has never been as high as in the 2019-2020

season when scientists and expeditioners from 17 different countries were welcomed to Princess Elisabeth Antarctica. Scientists are motivated to work at PE as they are able to further reduce the environmental footprint of their research, as they learn more about Earth and its climate system.

As security issues made their way into the global Arctic dialogue, the 10th edition of the IPF organized Arctic Futures Symposium, held in Brussels in November 2019, addressed these and other key topics of interest to Arctic stakeholders at the annual conference. Gender and demographic issues in the Arctic, making use of the bio economy in moving towards a more sustainable circular economy, and the direction of the Arctic Council in the coming decade were topics Arctic stakeholders felt important to address at the event. It is heartening to know that in spite of the geopolitical situation, the Arctic Council remains a forum committed to finding areas of cooperation and action between Arctic states, Arctic Indigenous Peoples, observer states, and observer organizations. The International Polar Foundation is committed to helping foster continued dialogue on issues important to Arctic stakeholders in the years ahead.

The Arctic Futures Symposium is much valued by the Arctic Stakeholders as it permits making professional contacts, networking with other polar professionals, academics and students outside the setting of the formal conference. This aspect is also an avenue the International Polar Foundation reinforced in 2019. The Foundation teamed up with the Arctic Institute and the Association of Polar Early Career Scientists (APECS) Belgium to hold an Arctic professionals networking event in Brussels, the first such event of its kind to be held in Brussels. Fostering these kinds of informal professional connections will help develop new initiatives and avenues for cooperative synergies. There are plans to hold similar events in the future.



In addition, the IPF completed a report on Reducing the Environmental Impact of Arctic and Alpine Research Station for the Horizon 2020-funded INTERACT project. This report will reach the 94 Arctic Research Stations participating in the project.

As we enter a new decade, the International Polar Foundation remains committed to promoting action on climate change based on sound scientific research and encouraging others to realize that they have the power to take action themselves. The actions we take now will be critical in shaping our world in the decades to come.

A handwritten signature in black ink, reading "Alain Hubert", followed by a long horizontal line extending to the right.

Alain Hubert,  
CEO, International Polar Foundation

# THE INTERNATIONAL POLAR FOUNDATION: CONNECTING SCIENCE AND SOCIETY

The International Polar Foundation supports polar scientific research for the advancement of knowledge, the promotion of informed action on climate change, and the development of a sustainable society.

Founded by Belgian polar explorer Alain Hubert, Prof. Hugo Declerck and Prof. André Berger in 2002, the Brussels-based International Polar Foundation provides a novel interface between science and society, and was recognized by Belgian Royal Statute as a foundation for the public good in 2002. HM King Philippe is the International Polar Foundation's honorary president.

The Foundation seeks to bring about a

keener appreciation of the role of science, particularly research in the Polar Regions, through a re-examination of the planet's interconnections, its fragility, the impact of human actions on the environment, and the evolution of millennial climate cycles.

To achieve its aims, the Foundation initiated several high-profile projects, including supporting polar science through the creation and operation of the wind-and-solar-powered zero emission Princess Elisabeth Antarctica station, logistical support of scientists working in Antarctica, fellowship awards for Antarctic researchers, an annual symposium on Arctic issues, and science and education websites, which offer classroom activities and resources.

# INTERNATIONAL POLAR FOUNDATION STRUCTURE

## HONORARY PRESIDENT:

HM King Philippe of Belgium

## FOUNDERS:

Alain Hubert, Civil Engineer, Polar Explorer, Mountain Guide,  
André Berger, Climatologist, Emeritus Professor at UCL (Belgium), Honorary President of the European Geosciences Union  
Hugo Decler, Glaciologist, Emeritus Professor at VUB (Belgium)

## HONORARY MEMBERS:

Roger Barry, National Snow and Ice Data Centre (NSIDC), USA  
Paul Crutzen, Max Planck Institute, Mainz, Germany  
Ivan Frolov, Arctic and Antarctic Research Institute (AARI), Russia  
Claude Lorius, Laboratoire de Glaciologie et Géophysique de l'Environnement (LGGE), France  
Lawrence Mysak, McGill University, Canada  
Olav Orheim, Norwegian Research Council, Norway  
Dahe Qin, China Meteorological Administration (CMA), China  
Chris G. Rapley, University College London (UCL), UK  
Susan Solomon, Massachusetts Institute of Technology (MIT), USA  
Konrad Steffen, Cooperative Institute for Research in Environmental Sciences, University of Colorado  
Jorn Thiede, St Petersburg State University, Russia  
Svein Tveitdal, GRID Arendal, UNEP, Norway  
Okitsugu Watanabe, National Institute of Polar Research (NIPR), Japan

## EXECUTIVE COMMITTEE:

Alain Hubert: President, International Polar Foundation  
Nighat Amin: Head of Environmental and International Affairs, International Polar Foundation  
Quentin Debacker: Legal and Administrative Affairs

## FINANCIAL:

Luc Corluy: Chief Financial Officer  
Arnaud de Viron: IPF Finance and Accounting

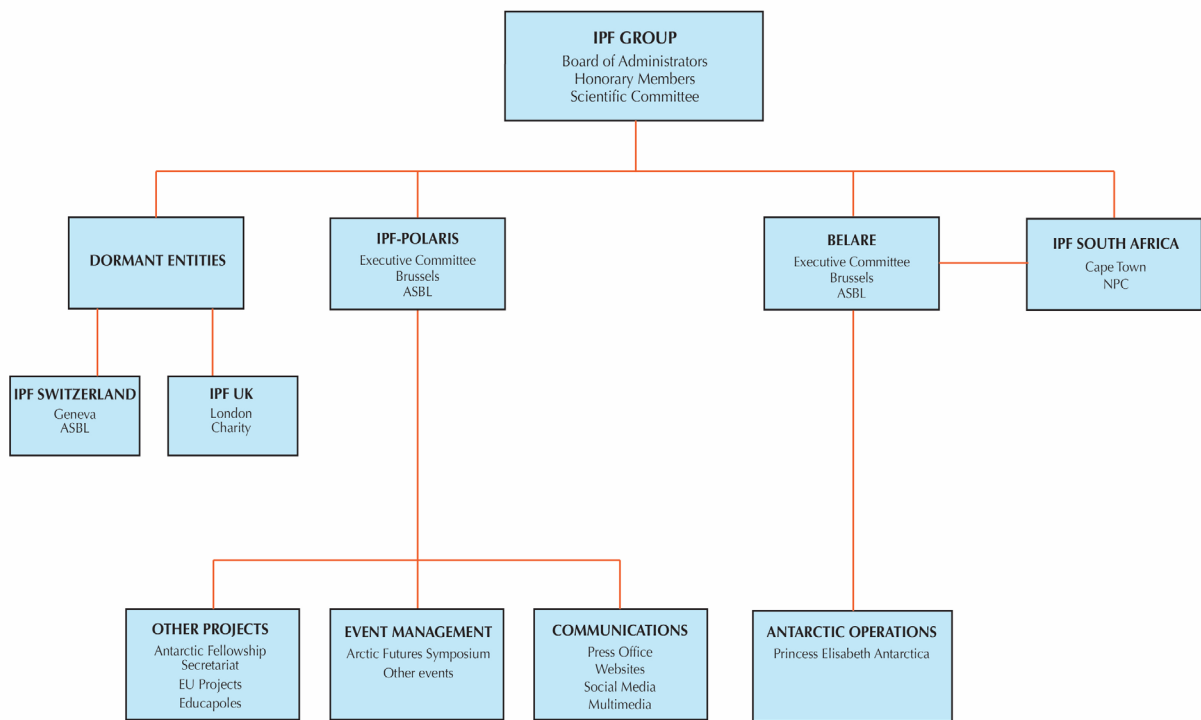
## BOARD OF DIRECTORS:

Louis Greindl, Chairman of the Board (mandate: September 2019 - September 2024)  
Alain Hubert, Founder President (mandate: December 2018 - December 2023)  
André Berger, Founder (mandate: December 2018 - December 2024)  
Nighat Amin, Director (mandate: September 2019 - September 2024)  
Piet Steel, Chairman of the Board of POLARIS asbl, Member the Belgian Polar Secretariat (mandate: December 2018 - December 2023)  
Marc Speeckaert, Member of the Belgian Polar Secretariat (mandate: December 2018 - December 2023)  
Alain Dewaele, Independent Director (mandate: September 2019 - September 2024)  
Olivier Perier, Independent Director (mandate: September 2019 - September 2024)  
Eric Goens, Chairman of the Board of BELARE (mandate: September 2019 - September 2024)  
Jacques de Mevius, Independent Director (mandate: September 2019 - September 2024)



# ORGANIZATION CHART

## INTERNATIONAL POLAR FOUNDATION (IPF)



# CONTACT INFORMATION

---

## INTERNATIONAL POLAR FOUNDATION HEADQUARTERS

BELARE ASBL HEADQUARTERS

POLARIS ASBL HEADQUARTERS

Rue des vétérinaires, 42b / 1

1070 Brussels

Belgium

Phone : +32 (0) 2 520 34 40

Fax : +32 (0) 2 520 06 63

[info@polarfoundation.org](mailto:info@polarfoundation.org)

## ON THE WEB

[www.polarfoundation.org](http://www.polarfoundation.org)

[www.arcticfutures.org](http://www.arcticfutures.org)

[www.educapoles.org](http://www.educapoles.org)

[www.antarcticstation.org](http://www.antarcticstation.org)

[www.sciencepoles.org](http://www.sciencepoles.org)

[www.explorapoles.org](http://www.explorapoles.org)

## INTERNATIONAL POLAR FOUNDATION GLOBAL OFFICES

The International Polar Foundation headquarters are located at the heart of Europe, in Brussels, Belgium.

We also have regional offices in South Africa,

## IPF SOUTH AFRICA

Somerset Square

Highfield Road

Green Point

8005 Cape Town

South Africa

Phone: +27 82 776 4000

Email: [mdewouters@polarfoundation.org](mailto:mdewouters@polarfoundation.org)

# ACTIVITIES OF THE IPF

## ANTARCTIC OPERATIONS

The International Polar Foundation works with the Belgian Polar Secretariat as the Belgian officially appointed Antarctic operator and manager of the revolutionary Zero Emissions Princess Elisabeth Antarctica Research Station. As part of the arrangement with the Belgian Competent Authorities IPF also hosts some international research programs at PE.

Antarctic operations are managed through the Belgian Antarctic Research Expeditions - BELARE asbl, a subsidiary of the IPF.

### BELARE 2018-2019

Lasting from November 2018 until the end of February 2019, the 2018-2019 season was a very active one, with scientists from Belgium, the United Kingdom, Switzerland, Germany, Hungary, Norway,



Turkey, and Japan using the Princess Elisabeth Antarctica (PEA) as a base of operations to work on 17 different research projects focusing on areas of research including glaciology, atmospheric sciences, microbiology, geology, and geomagnetism.

A total of 12 research projects sent scientists to the station during the 2018-2019 season:

- **BioFe in Glacial Systems**

The laureate of the Baillet-Latour Antarctica Fellowship, Dr. Kate Winter from Northumbria University in the UK, spent the first of two seasons investigating how nutrients in the detritus in ice flowing via the Antarctic Ice Sheet contributes to carbon dioxide uptake by phytoplankton and other primary producers (photosynthetic microscopic organisms) in the Southern Ocean. Dr. Winter spent the first two seasons under the Fellowship taking samples along with radar and drone images of rocky outcrops in the vicinity of the station to monitor sediment movement.

- **CHASE**

Researchers from the Royal Meteorological Institute of Belgium (KMI/IRM), Ghent University (UGent), the Université Libre de Bruxelles (ULB), and the Vrije Universiteit Brussel (VUB) are cooperating to build a unique database of organic and inorganic particles in the atmosphere and on the surface of the snow in the region around the Princess Elisabeth Antarctica. Two researchers spent just over a month at the PEA in November and December



collecting samples of organic and inorganic atmospheric particles.

- **MASS2ANT**

Seven researchers from the Université Libre de Bruxelles (ULB) led by Prof. Jean-Louis Tison seeking to better understand the variability in the surface mass balance of ice cover in East Antarctica spent several weeks taking ice cores from a series of ice rises in the vicinity of the King Baudoin Ice Shelf at the coast about 200 km from the station. The team drilled was able to extract a record 260 meter-deep ice core from one of the ice shelves. The ice cores they extracted will reveal clues about variation in ice mass balance in the region over the last few hundred years.

- **DEAIS**

A researcher from the University of Bern in Switzerland conducted cosmic sampling to determine how ice cover in the Dronning Maud Land has changed over time. Understanding how ice coverage has changed in the past can help predict how the Antarctic Ice Sheet might react to a warming climate in the future.

- **MICROBIAN**

Three researchers from Ghent University and the University of Liège in Belgium took samples, conducted maintenance of monitoring equipment, and used drones to make high-resolution maps of areas of interest in Sør Rondane Mountains in their quest to map



microbial life in the ice-free areas of the Sør Rondane Mountains near the PEA Station.

- **GEOMAG**

Two researchers from the Royal Observatory of Belgium (KMI / IRM) took measurements and installed a series of instruments at the King Baudoin Ice Shelf at the coast as part of the GEOMAG project. During their time at the station, the researchers did maintenance on the geomagnetic observatory located in a shelter next to the station.

- **From Clouds to Ground and LOSUMEA**

A joint effort undertaken between the WSL Institute for Snow and Avalanche Research (SLF) and the CRYOS lab at the Polytechnic School of Lausanne (EPFL) in Switzerland, these connected projects aim to clarify the relationship between precipitation, drifting and blowing snow, and ice formation as they investigate snow deposition and surface mass balance of ice in East Antarctica. One scientist at the Princess Elisabeth Antarctica and one at the Japan's Showa Station maintained monitoring equipment for the project.

- **Meteorite hunt preparation mission**

Kirklareli University in Turkey sent a researcher to survey the Sør Rondane Mountains not far from the PEA Station to prepare for an

expedition to hunt for meteorites in the blue ice fields on the Antarctic Plateau during the 2019-2020 season with Belgian and Japanese scientists. Meteorites can give clues about the origins and development of our solar system. The clear, blue ice preserves the meteorites and makes them easy to find.

- **LGGE Transect**

PF President and BELARE Team Leader Alain Hubert continued his decade-long commitment to the the Glaciology Laboratory at the University of Grenoble Alpes in France to take snow depth measurements along a transect between Crown Bay at the coast and Vesthaugen Nunatak. Glaciologist Jean Rasson from the Royal Meteorological Institute of Belgium (KMI / IRM) accompanied Alain on the 180 km trek.

- **POLAR 6 Surveys**

Since the 2011-2012 research season, scientists from the Alfred Wegener Institute (AWI) in Germany have used the Princess Elisabeth Antarctica as a base for conducting aerial surveys over East Antarctica in AWI's Polar 6 aircraft. During the 2018-2029 season, the plane took radar profiles of the ice along transects at the coast and on the Antarctic Plateau to determine the thickness and density of both the land ice and the ice shelves at the coast to better understand how the continent's ice mass balance is changing and to what extent this is due to climate change.



- **Beyond EPICA**

An international group of researchers taking part in the Beyond EPICA project stopped at the Princess Elisabeth Antarctica on their way to and from Dome Fuji on the Antarctic Plateau. This research project seeks to drill an ice core at Dome Fuji, which many scientists believe contains ice that is at least 1.5 million years old, allowing scientists to better understand Antarctica's climate going back that far.

Research projects aren't always able to send a researcher to Antarctica to collect data and maintain instruments. This is where the International Polar Foundation staff from the BELARE team give professional assistance to projects that don't have researchers on-site during every season. These engineers and technicians assist scientists either by collecting data themselves or maintaining equipment to ensure that the instruments continue to collect data even when the scientists are unable to go to Antarctica.

The station's satellite link allows data collected from the instruments from all projects to be sent to each project's respective institution(s) in Europe once per day, allowing scientists to get new data sets on a daily basis, and to communicate with BELARE staff on-site whenever needed.

- **ACME**

A collaboration between the Belgian Royal Meteorological Institute (KMI / IMR), the

International Polar Foundation (IPF), and the Swiss Federal Institute for Forest Snow and Landscape Research (WSL), this project involves taking daily meteorological measurements such as temperature, wind speed, humidity, precipitation, and air pressure using instruments attached to a balloon released into the atmosphere from the Princess Elisabeth Antarctica. Data collected will contribute to the Year of Polar Prediction (YOPP) organised by the World Meteorological Organization (WMO).

- **AEROCLOUD**

A collaboration between KU Leuven, the Belgian Royal Meteorological Institute (KMI / IMR), and the Belgian Institute for Space Aeronomy (BIRA-IASB), this project aims to build a database on cloud, precipitation, and aerosol properties in the vicinity of the station. The BELARE team maintained equipment to measure cloud temperature and aerosols during the 2018-2019 season.

- **AWDA**

This project records natural very low frequency (VLF) electromagnetic waves (0 - 10 kHz) in order to pick up “whistler waves” (pulses of low frequency waves in the atmosphere generated

by natural phenomena such as lightning, which propagate around Earth’s ionosphere along the planet’s magnetic field lines). The BELARE team performed maintenance on equipment for this project.

- **GIANT**

A decade-long project managed by the Royal Observatory of Belgium, the University of Luxembourg and the Royal Military Academy of Belgium, it continues to collect GPS, gravimetry and seismology data to track the horizontal and vertical deformation of Earth’s surface and how variation in ice mass in the Polar Regions contributes to this deformation. Maintenance was performed on some of the instruments used to collect data for this project during the season.

- **SEISMO**

BELARE team members are helping researchers from the Royal Observatory of Belgium with maintenance of seismometers at the Princess Elisabeth Antarctica. These seismometers are gathering unique information about the lithosphere and seismic activity in East Antarctica.





## CONSTRUCTION PROJECTS

The BELARE team is always hard at work making the world's first zero emission polar research station an even better place to stay. A number of construction and maintenance projects were undertaken during the 2018-2019 season to update and expand the capacity of the station and its facilities.

Over the course of the season, an extension to the station, which had been started during the 2017-2028 season, was completed. The extension holds 16 new bedrooms with a double bunk bed in each. The capacity of the station annex remains 32 people, as the previous structure was demolished. The annex also has new sanitary facilities, an equipment storage area, and a dedicated area for the snow melter (which makes drinking water at the station and had previously been located outside of the station).

Due to the adaptation of the installation of additional capacity by the Station engineers and the input from the original system designer, the water treatment capacity of the station was effectively doubled. The water treatment at PE is among the most advanced in the Antarctic and the reduction in environmental impact is significant in comparison to what exists on other sites.

A project to increase the station's energy production and storage capacity also got underway during this season, with further progress in the 2019-2020 season allowing for the



smart management and optimisation of energy use, including previously dumped energy.

Lastly, a new hangar to store large vehicles and equipment during the winter was built 2 km from the station at the "winter Park", where an air strip serves wheeled aircraft bringing scientists and staff to and from the station. The new hangar saves days of work at the start of each season, as it is no longer necessary to dig equipment out of the snow before it can be used.

In the 2019-2020 there were two landings by large wheeled aircraft which permitted Swiss scientists to bring very large equipment to Princess Elisabeth for their 2019-2020 campaign. This would have been impossible by ship or by ski-equipped aircraft.



# BAILLET LATOUR ANTARCTICA FELLOWSHIP

## BACKGROUND

The €150,000 Baillet Latour Antarctica Fellowship - a joint initiative of the Baillet Latour Fund and the International Polar Foundation - is a biannual award that aims to promote scientific excellence in Antarctica and underscores the crucial role polar science plays in furthering our understanding of the Earth and how it functions.

Since it was first awarded in 2008, the Fellowship has provided early career polar scientists with the opportunity to conduct research in East Antarctica while basing their operations out of the Princess Elisabeth Antarctica (located in Dronning Maud Land in East Antarctica at 71.57°S 23.20°E).

The Fellowship is open to doctoral researchers or post-doctoral researchers from any country in the world and who have completed their PhD within the last 10 years. Four fields of research are possible under the Fellowship: (1) Atmospheric Sciences (2) Geology (3) Glaciology and (4) Microbiology (excluding marine).



[http://www.polarfoundation.org/projects/detail/baillet\\_latour\\_fellowship](http://www.polarfoundation.org/projects/detail/baillet_latour_fellowship).

## 1ST FIELD SEASON FOR 2018 FELLOW

The Dr. Kate Winter from the Northumbria University in the UK was awarded the 2018-2020 Fellowship for her BioFe Project, which is investigating how biologically available iron is transported via glacial flow from the interior of Antarctica to the Southern Ocean.

Iron compounds serve as key nutrients for primary producers (such as phytoplankton) in the ocean food chain. As they take in carbon dioxide (CO<sub>2</sub>) from the atmosphere when they grow and multiply, it is important to understand how the iron nutrient cycle in Antarctica influences the rate at which primary producers absorb carbon dioxide (a key greenhouse gas driving climate change) from the atmosphere.

Before Dr. Winter's research, the iron nutrient cycle in Antarctica had not yet been studied in great detail. The BioFe project is designed to be a proof of concept for investigating ideal methods to use to track the iron nutrient cycle in Antarctica.

During the 2018-2019 season, Dr Winter had four primary goals to accomplish:

- Take samples of rock sediment to determine the amount of biologically available iron in them.



- Conduct ice radar transects and radar soundings to get a clear image of the subglacial topography of the ice-bedrock interface as well as layers of the ice above the bedrock.
- Take drone imagery of several mountains near the PEA Station to create 3D images of the rock walls, which will be compared to images taken during Dr Winter's 2nd season in Antarctica to determine how much rock sediment each mountain produces over a year.
- Install seismometers to determine when rocks from the same mountains fall to the ground, providing an idea of how often rock debris falls off of the mountains.

Dr. Winter was able to accomplish all four primary tasks thanks to assistance from the IPF's excellent team of field guides and engineers.

A strong advocate of outreach, Dr. Winter took part in a number of online lessons with school students while in Antarctica and over the course of the rest of the year.

She also sat for interviews with a number of media outlets such as Bloomberg News and the Conversation to discuss her work and talk about how the importance of the Princes Elisabeth Antarctica and how it helps scientists to reduce their environmental impact when doing research.



## INTERACT PROJECT

### BACKGROUND

The International Network for Terrestrial Research and Monitoring in the Arctic (INTERACT) is an infrastructure project funded by the EU under the Horizon2020 funding programme. The project is under the auspices of SCANNET, a circumpolar Arctic network of more than 90 terrestrial field stations across northern Europe, Russia, US, Canada, Greenland, Iceland, the Faroe Islands, Scotland and some northern alpine areas. The INTERACT project aims to build capacity for identifying, understanding, predicting, and responding to diverse environmental changes throughout the wide environmental and land-use envelopes of the Arctic, as many parts of the Arctic are sparsely monitored.

<https://eu-interact.org/>

### ADVISING ARCTIC RESEARCH STATIONS

Thanks to its experience designing, constructing, and operating the Princess Elisabeth Antarctica (the world's first zero-emission polar research station) on behalf of the Belgian Government for more than a decade, the International Polar Foundation was asked by the INTERACT project's consortium members to share its expertise on how to reduce the environmental impact of research stations and the scientific activities that take place at them.

As the purpose of building the Princess Elisabeth Antarctica was to show that it's possible to live more sustainably even in the most harsh environments





and encourage others to follow this example, the International Polar Foundation was happy to share its knowledge with the Arctic station managers involved in the project hoping to lower the environmental footprint of the facilities they run.

One of the IPF's contributions to the INTERACT project during 2019 was completing a report for the benefit of the stations involved in the project consortium.

Entitled “[INTERACT Report on Reducing Environmental Impacts at Arctic and Northern Alpine Research Stations](#)”, the final report was completed by Nighat Johnson-Amin of the IPF in May 2019. The report was approved by the EU and presented to the consortium during the 5th Station Manager's Forum for the project held in September 2019 in Vindeln, Sweden.

The report is downloadable from the INTERACT project's website:

<https://eu-interact.org/download/deliverable-d3-11-interact-report-on-reducing-environmental-impacts-at-arctic-and-northern-alpine-research-stations/>

It highlights the sustainable design and construction (using passive building techniques and high performance materials developed from conventional and renewable resources such as wood), energy production and storage, energy use and management), and waste water treatment and recycling practices used



at the Princess Elisabeth Antarctica Station.

The report also uses feedback collected from managers of Arctic stations within the INTERACT project during the consortium's 3rd Arctic Station Managers meeting held in Vahrn, Italy in March 2018, where the IPF organized a full day workshop led by the Princess Elisabeth engineering team.

It integrates information about stations in the INTERACT network to investigate the feasibility of implementing different solutions to reduce a station's environmental footprint, including: using renewable energy sources and managing energy use; increasing energy efficiency and reducing heat loss; using more environmentally friendly methods to handle and treat waste; using less water and recycling more water; and approximate costs and a suggested road map for implementing these solutions.

As the practicality of implementing these solutions at each station can vary depending on the local environment, the availability of renewable energy, local legal and regulatory requirements, and the methods of operation of each of the stations currently in the INTERACT network, the report also recommends establishing an online platform in which station operators can share experiences and best practices, as well as information about suppliers of materials and equipment.

# ARCTIC FUTURES SYMPOSIUM 2019

Continuing an annual tradition in Brussels, the International Polar Foundation and many Arctic stakeholder partners organized the 2019 Arctic Futures Symposium, entitled, “Addressing the Challenges of a New Decade in the Arctic”, on Monday 25 November 2019 at the Residence Palace in the EU Quarter of Brussels.

The Arctic Futures Symposium is an annual event that allows Arctic stakeholders to openly discuss topics they feel are important to address in the Capital of Europe, with the participation of representatives from the European Institutions. Speakers and attendees always include prominent international policymakers from the EU and Arctic Council member and observer states, Arctic Indigenous Peoples, scientists, academics, entrepreneurs, and industry representatives.

Organized in conjunction with Arctic stakeholders including representatives from Arctic state embassies and Nordic regional offices in Brussels, the 2019 symposium focused on a number of topics highlighted under the 2019-2021 Icelandic Chairmanship of the Arctic Council.

About 180 people attended the symposium, nearly filling the auditorium in which the event took place.



## THEMES OF THE SYMPOSIUM

The 2019 symposium investigated topics of importance to Arctic stakeholders as a new decade in the Arctic approached.

A group of highly distinguished keynote speakers opened the symposium, including Veronica Veits (Director for Ocean Governance and Sustainable Fisheries at DG MARE), Elle Merete Omma (EU Coordinator, Sámi Council), Lars-Gunnar Wigemark (the EU’s Ambassador at Large for the Arctic at the time) and Professor Jean Pascal van Ypersele (former IPCC Vice-Chair and co-author of the UN Global Sustainable Development Report 2019, Climatologist from UCLouvain) who stressed the urgency of climate emergency for the Arctic region.

They sessions addressed the following themes:

- **The Arctic Council in a Changing Arctic**  
Arctic Centre at the University of Lapland researcher Malgorzata “Gosia” Smieszek led a discussion with representatives from Arctic Council member and observer states, Arctic Indigenous Peoples, and the European External Action Service (EEAS). Discussions focused on the current geopolitics and how it influences the Arctic dialogue, as well as implementing the UN Sustainable Development Goals (SDGs) in the region.
- **The Overlap between Safety and Security in the Arctic**  
The second panel, moderated by Senior Research Fellow at the Fridtjof Nansen



Institute in Oslo, Dr. Andreas Østhagen, discussed the geopolitical and security issues in the Arctic which had emerged over the last year. Military buildup in the Arctic and China’s increasing interest in the region were focus points during much of the discussion.

- **Gender Considerations in the Arctic**

Taking place on the International Day of Violence against Women, this panel, led by Rósa Rut Þórisdóttir of the Steffanson Arctic Institute, focused on gender differences in the labour force in the Arctic, violence against women, experiences in Arctic Indigenous communities, and how smart policymaking can address the key issues.

- **Arctic Labour Force and Demographics**

The session, moderated by Federica Scarpa, Communications Manager at the Icelandic Arctic Cooperation Network (IACN) and the International Arctic Science Committee (IASC), focused on maintaining a well-trained labour force in the Arctic. Discussions focused on the skills gap of the labour force, lack of opportunities for higher education, low mobility of the labour force, encouraging youth entrepreneurship, and convincing those who may have left for higher education to return to the Arctic to make a living.

- **Sustainable and Innovative Uses of Arctic Biological Resources**

Christian Prip, Senior Policy Analyst at the Fridtjof Nansen Institute in Oslo, led a discussion about how the Arctic regions

could make use of their vast biological resources such as fish stocks and forests to further develop more sustainable economic activities. This can be accomplished through the use of local policies and initiatives, coupled with data-driven, evidence-based management of resources.

## SYMPOSIUM PARTNERS

The 2019 symposium was made possible thanks to the contributions of the following organizations:

- Brussels Capital Region
- The Mission of Canada to the European Union
- The Permanent Representation of Finland to the European Union
- The North Norway European Office
- The East and North Finland European Office
- The North Sweden European Office
- The Mission of Norway to the European Union
- The Representation of Greenland to the European Union
- The Mission of the Faroes to the European Union
- The Québec Government Office in Brussels
- The Mission of Iceland to the European Union
- Arctic Consensus

The full symposium programme, speaker bios, and symposium summary can be found on the Arctic Futures website ([www.arcticfutures.org](http://www.arcticfutures.org)) under “About”.







## ARCTIC SHORTS FILM EVENING AT BOZAR

The Arctic Shorts Film Evening was such a success in 2018 as an official side event of the Arctic Futures Symposium that it was decided to hold the popular event again in 2019.

Organized in cooperation with the Mission of Canada to the EU, the BOZAR centre for fine arts in Brussels, and the many Arctic Futures Symposium partners, the 2nd annual Arctic Shorts Film Evening took place on Monday 18 November from 7:30 pm until 10:00 pm in Salle M at BOZAR.

As a way to introduce the general public in Brussels to Arctic art and culture, the event formed part of the BOZAR Nordic Fall Programme of cultural events.

More than 350 members of the general public packed Salle M to watch seven short films made by filmmakers coming from the Faroe Islands, Canada,

Sweden, Finland, Iceland, Greenland, and Norway.

The films presented included:

- Ikki illa meint (No Ill Will) 21', 2018, Dir: Andrias Høgenni (Faroe Islands)
- Katatjatuuk Kangirsumi (Throat Singing in Kangirsuk | Chants de gorge à Kangirsuk) 3.5', 2018, Director: Manon Chamberland and Eva Kaukai, Wapikoni Mobile (Québec, Canada)
- Signal 11', 2018, Director: Oscar Byström (North Sweden)
- Eatnanvuloš Lottit – Maan Sisällä Linnut (Birds in the Earth) 11', 2018 Dir: Marja Helander (Sápmi / Finland)
- Victoria 12', 2018, Director: Brúsi Ólason (Iceland)
- Home 8', 2018, Director: Inuk Jørgensen (Greenland)
- Beast 15', 2019, Director: Aasne Vaa Greibrokk (North Norway)

After the screening of the films, Martha Otte, the Director of the Tromsø International Film Festival, moderated a discussion with two of the filmmakers whose films had been presented during the evening: Odile Joannette from Wapikoni Mobile in Québec, Canada, and Inuk Jørgensen from Greenland. All three took questions from the audience to allow for a more interactive experience.

Due to its great popularity, the Arctic Shorts Film Evening is expected to return again in the future.



## EDUCATION AND OUTREACH

Younger generations will have to be prepared to meet the challenges climate change has created, as they will have to face the consequences of it to a greater extent than the current generation.

The International Polar Foundation has made this challenge a major priority by developing awareness-raising and didactic educational and communication tools, which are made available to associations active in the field of education and outreach.

The International Polar Foundation makes its educational materials available upon request to schools, associations and private individuals in the form of CDs, as well as all content and activities from the Educapoles and Sciencepoles websites.

The foundation also provides speakers to animate conferences, seminars or workshops for associations and schools.

### CLASSROOM AND MEDIA OUTREACH

The foundation also provides speakers to animate conferences, seminars or workshops for associations and schools.

Stimulating young peoples' interest in polar research, the environmental sciences,



climate change, and how to live in a more sustainable way. During 2019, International Polar Foundation Science Liaison Officer Henri Robert and scientists working at the Princess Elisabeth Antarctica Station did just this by leading online discussions with classrooms in Belgium and elsewhere around the world.

In addition to talking about research in Antarctica and how it helps us better understand the planet's climate system, they also encourage young people to pursue careers in STEM (Science, Technology, Engineering, Mathematics) fields.

In a few of the calls done from the station during the 2018-2019 season, some of the scientists asked students to conduct experiments of their own in order to learn about the scientific method and develop critical thinking skills needed to work in STEM fields. It made for a very exciting interactive learning experience for the students!

In September, Mr. Robert was also interviewed for Columbian news outlet NTN24. He answered questions about the impact of climate change on Antarctica and the flora and fauna that live there. The interview was part of a series of reports investigating the impacts of climate change on Earth's environment.

IPF Founder and President Alain Hubert spoke to the Brussels Times during the summer, highlighting the work being done at the Princess Elisabeth Antarctica and the importance of taking action in the fight against climate change.





In addition, engineer Guus Luppens from the IPF BELARE team, who is in charge of upgrading the station's energy production and output, took several occasions to speak to Belgian and international media about the station and how it functions. Even ten years after its inauguration, the Princess Elisabeth Antarctica is still getting media attention!

## ANTARCTICA DAY 2019

Together with the Association of Polar Early Career Scientists (APECS) Belgium, the International Polar Foundation took part in Antarctica Day (the anniversary of the signing of the Antarctic Treaty) celebrations at the Royal Belgian Institute for Natural Sciences in Brussels with visitors to the Museum's temporary Antarctic exhibition.

Different activities for parents and kids presented the scientific activities conducted by Belgian researchers in Antarctica and familiarized them with the zero-emission Princess Elisabeth Antarctica Station. Games taught children how to understand the differences between food webs in the Arctic and the Antarctic, while microscopes helped them to observe microorganisms that live in Antarctica.

The highlight of the day was a videoconference direct from the Princess Elisabeth Antarctica Station with Henri Robert, IPF's Scientific Liaison Officer, who showed them live images

of Antarctica from the station's window. He responded to audience questions about daily life and the research that goes on at the station, and also discussed future environmental challenges that climate change could bring.

## UNITED FOR CLIMATE HUMAN CHAIN

On Saturday 7 December 2019, scientists and the operational team of the International Polar Foundation working at the Princess Elisabeth Antarctica joined a global movement to express their support for NGOs such as Climate Express, the Climate Coalition, and many others to support the "United for Climate - Human Chain" awareness-raising campaign.

The campaign formed a human chain in Brussels to urge politicians to take meaningful measures to significantly reduce greenhouse gas emissions causing climate change. Thousands turned out in the Belgian capital to support the campaign.

Everyone at the PEA Station symbolically extended the human chain all the way to Antarctica, around the world's first zero-emissions polar research station, a symbol of concrete action that can be taken to reduce one's environmental footprint.

It was a very breathtaking scene to see everyone at the station act in solidarity with campaigners in Brussels. It was certainly a moment everyone will remember!





## ARCTIC PROFESSIONALS NETWORK EVENT

In May 2019, the International Polar Foundation teamed up with the Arctic Institute and APECS (Association of Polar Early Career Scientists) Belgium to host an Arctic Professionals Network Event, the first such networking event to be organized in Brussels.

Held on 15 May at the Sister Café in Brussel's historic centre, the event's goal was to create a bridge between early-career polar professionals and more experienced polar stakeholders from different disciplines and backgrounds.

While there are many conferences around the world where one can network in a formal setting, there are not many occasions to do so in an informal one. Making professional contacts in an informal setting allows for productive, healthy and robust cross-sector and multidisciplinary relations between those working in Arctic issues (whatever their specialization may be) and those studying them.

Having held a similar event in Oslo a few months earlier, the Arctic Institute decided to hold another such event in Brussels due to the location of the European Institutions and many embassies and representations of Arctic states in Brussels, and to team local partners active in polar affairs.

About 20 professionals, including scientists,

academics specialized in Arctic policy issues, representatives from the European Institutions and European regional offices, Arctic State embassies, and students from the Benelux area took part in the event. It was a very interesting evening for all who took part in this initiative.

Due to the interest shown by those who attended the event, the organizing committee is considering holding similar networking events in Brussels in the future.

## BELGIAN ENERGY AND ENVIRONMENT PRIZE

Since 2006, the Energy and Environment Prize has paid tribute to nearly 2,500 Belgian citizens, companies, institutions, associations, schools, administrations and others that, either individually or through their organizations, have made exceptional contributions towards building a sustainable future at the local, regional and national levels.

The International Polar Foundation has actively supported the Belgian Energy and Environment Prize since it began. Given every year in June to a person or organization, the prize recognizes candidates for their outstanding achievements in creating sustainable solutions to issues related to the environment and energy use.





The Bout2Bois wood workshop on the Nos Pilifs Farm in the commune of Neder-Over-Heembeek in Brussels was chosen as the 2019 winner of the 14th annual International Polar Foundation Award during the prize ceremony, which was held on 6 June at Tour and Taxis event centre in Brussels.

Bout2Bois does its part to help expand the circular economy by extending the life cycle of discarded wood and wood products, transforming them into items such as furniture, garden fences, and playground equipment. The organization is

also designed to be able to employ people with disabilities, highlighting its social engagement.

<https://www.ecobuild.brussels/fr/projet/bout-2-bois>

A total of 84 projects were in competition for the ten awards given out under the Belgian Energy and Environment Prize. Projects from the categories of education, circular economy, food, energy, mobility, and construction were considered.



# ONLINE OUTREACH

## WEB PRESENCE

Over the course of 2019, the International Polar Foundation websites, polarfoundation.org and arcticfutures.org, were the most dynamic. The Station website antarcticstation.org has to be updated in the coming months.

The IPF offers three websites which are frequently visited: educapoles.org, sciencepoles.org, and explorapoels.org. These websites are accessible to members of the general public and schools who wish to reference content posted on them. The content is more static and there is some discussion about updating content and multi-media tools for educational content in light of eventual obsolescence of certain media, as well as advances in the polar science content which needs updating.

The International Polar Foundation's six websites received a total of 130,701 unique visitors all around the globe in 2019.

The top recurring visitors to the foundation's websites originate from the following countries: Belgium, the United States, France, the United Kingdom, Canada, Germany, India, South Korea, China, Switzerland, the Netherlands, Norway, Finland, Denmark, Sweden, Russia, Australia, Ireland, South Africa, Poland, Turkey, Spain, Portugal, Italy, Austria, Hungary, Czech Republic, Morocco, Japan, Saudi Arabia, Kenya, Argentina, Chile, Brazil, New Zealand, Thailand, Malaysia, Indonesia, Mexico, Peru, Bolivia, Uruguay, Columbia, Venezuela, Tanzania, Algeria, Egypt, Nigeria, Congo, Iceland, the Faroe Islands, and Greenland.

## ACTIVE WEBSITES

POLARFOUNDATION.ORG is the International Polar Foundation's principal active website at the moment. Content pertaining to the Foundation's initiatives, projects, and events, in line with the Foundation's mission to connect science and society, are communicated on this website by way of news items, photos and press releases. A total of 23 news items (along with relevant photos) and one press release were published on this website in 2019.

ARCTICFUTURES.ORG provides information about the annual Arctic Futures Symposium - a multinational and multidisciplinary event at which Arctic stakeholders from Brussels and around the



globe gather to discuss topics of great interest within an EU context. An updated version of the website was unveiled in 2019, which included additional features such as news items related to the symposium and information about side events such as the Arctic Shorts Film Evening.

The website features a draft programme, a list of speakers, a list of sponsors, registration, directions, and summaries of every Arctic Futures Symposium since the first one took place in 2010. The programme for the 2019 symposium (which took place on Monday 25 November) was published on this website along with the 2019 symposium poster, speaker bio booklet and summary report, as well as the poster for the 2nd Arctic Shorts Film Evening.

ANTARCTICSTATION.ORG provides information about International Polar Foundation's flagship project, the Princess Elisabeth Antarctica - the world's first zero emission polar research base. The website is an archive of operations at the station, science projects, and the renewable energy

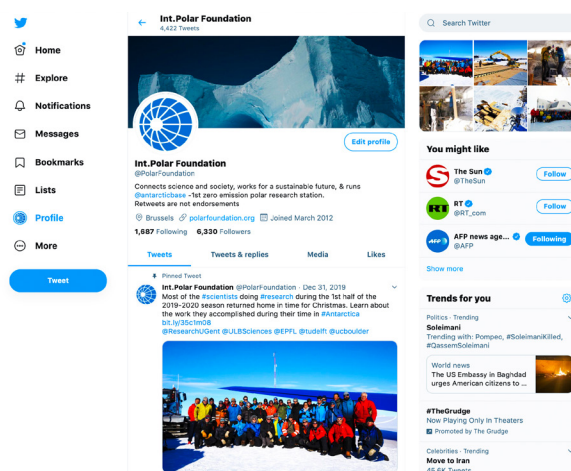
systems and smart grid used at the station. The website was re-activated in November 2019 to be able to present photos, videos and regular news items about the busy 2019-2020 season.

## ARCHIVED WEBSITES

EDUCAPOLES.ORG is a place where the International Polar Foundation's educational and multimedia tools can be found. The site provides educational materials to the teaching community in three languages: (English, Dutch and French). It also helps to raise awareness of the poles' importance as an early warning system and unique laboratory, and mobilizes citizens by providing the means to make informed actions against climate change. Aimed at teachers, future teachers, and all those involved in education, EducaPoles.org offers pedagogical dossiers, flash animations, videos, picture galleries, tales and ready-made contents such as quizzes, scientific experiments, and classroom activities.

SCIENCEPOLES.ORG is an archive of polar science articles and interviews with top polar scientists. By clearly explaining and demystifying complex scientific issues, the website contributes significantly to the Foundation's mission to connect science and society, catering to policy makers as well as the general public.

EXPLORAPOLES.ORG is an archive of information dedicated to Arctic and Antarctic expeditions, The website followed polar expeditions in the Arctic and the Antarctic with the goal of using adventure to raise awareness about the poles through adventure!



## SOCIAL MEDIA

Throughout 2019, the International Polar Foundation actively posted on its two social media platforms: Facebook ([@intpolarfoundation](#)) and Twitter ([@PolarFoundation](#)). Both platforms saw significant increases in followers.

The Foundation's social media platforms help to keep the Foundation's online followers informed about the activities of the Foundation as well as keep them up to date about important developments in polar and climate science, renewable energy, environmental and sustainability issues, and significant newsworthy events that have a link to the Arctic and Antarctic.

As the number of people who get their daily news summary from social media continues to increase, social media is an essential way to keep our followers informed about issues the International Polar Foundation and its followers are interested in.

At 2019 drew to a close, the International Polar Foundation had 2402 likes on its Facebook page, and the number of followers of its Twitter account totaled 6324. This represents an increase in "Likes" of 11.7% on Facebook (2150 likes at the start of 2019), and a 5.8% increase in Twitter (up from 5972 at the start of 2019) followers over the course of the year. At the start of 2018, and a 4.5% increase in Twitter followers over the course of the year.



# IPF IN THE NEWS

Throughout 2019, the International Polar Foundation and its activities were often covered in domestic and international press, blogs, and academic journals.

Below you may find a list of many of these articles with hyperlinks.

## THE COURIER UK

5 January 2019  
Graham Brown

[Angus scientist Kate's festive season poles apart from tradition in Antarctic setting](https://www.thecourier.co.uk/fp/news/local/angus-mearns/795769/angus-scientist-kates-festive-season-poles-apart-from-tradition-in-antarctic-setting/)

<https://www.thecourier.co.uk/fp/news/local/angus-mearns/795769/angus-scientist-kates-festive-season-poles-apart-from-tradition-in-antarctic-setting/>

## ATMOSPHERIC CHEMISTRY AND PHYSICS

8 January 2019  
Paul Herenz et. al.

[CCN measurements at the Princess Elisabeth Antarctica research station during three austral summers](https://www.atmos-chem-phys.net/19/275/2019/)

<https://www.atmos-chem-phys.net/19/275/2019/>

## BELANTAR BLOG

21 January 2019

[Retour à la station Princesse Elisabeth](https://www.bel-antar2018.be/2019/01/21/retour-a-la-station-princesse-elisabeth/)

<https://www.bel-antar2018.be/2019/01/21/retour-a-la-station-princesse-elisabeth/>

## HLN

22 January 2019,  
Anthony Stadius

[Koen Meirlaen informeert over klimaatopwarming](https://www.hln.be/in-de-buurt/deinze/koen-meirlaen-informeert-over-klimaatopwarming~a27574a4/?riferer=https%3A%2F%2Fwww.google.com%2F)

<https://www.hln.be/in-de-buurt/deinze/koen-meirlaen-informeert-over-klimaatopwarming~a27574a4/?riferer=https%3A%2F%2Fwww.google.com%2F>

## AA

9 February 2019  
Sena Güler

[From Antarctica, Turkish scientist fetches 3 meteorites](https://www.aa.com.tr/en/science-journey-to-antarctica/from-antarctica-turkish-scientist-fetches-3-meteorites/1387993)

<https://www.aa.com.tr/en/science-journey-to-antarctica/from-antarctica-turkish-scientist-fetches-3-meteorites/1387993>

## RTBF INFO

15 February 2019  
Pascale Bollekens with Lucie Dendooven

[La base polaire Princesse Elisabeth en Antarctique souffle ses 10 bougies](https://www.rtbf.be/info/societe/detail_la-base-polaire-princesse-elisabeth-en-antarctique-souffle-ses-10-bougies?id=10146670)

[https://www.rtbf.be/info/societe/detail\\_la-base-polaire-princesse-elisabeth-en-antarctique-souffle-ses-10-bougies?id=10146670](https://www.rtbf.be/info/societe/detail_la-base-polaire-princesse-elisabeth-en-antarctique-souffle-ses-10-bougies?id=10146670)

## RTL INFO

15 February 2019

[La station polaire Princesse Elisabeth célèbre ses 10 ans](https://www.rtl.be/info/video/698255.aspx)

<https://www.rtl.be/info/video/698255.aspx>

## 66 NORD BLOG

19 March 2019

[Guide polaire en Antarctique, un métier unique](https://blog.66nord.com/guide-polaire-en-antarctique-un-metier-unique/)

<https://blog.66nord.com/guide-polaire-en-antarctique-un-metier-unique/>

## HLN

20 March 2019  
Anthony Stadius

[Klimaatexpert Koen Meirlaen geeft lezing over klimaatopwarming in gemeentehuis](https://www.hln.be/in-de-buurt/de-pinte/klimaatexpert-koen-meirlaen-geeft-lezing-over-klimaatopwarming-in-gemeentehuis~a5b7ba6b/)

<https://www.hln.be/in-de-buurt/de-pinte/klimaatexpert-koen-meirlaen-geeft-lezing-over-klimaatopwarming-in-gemeentehuis~a5b7ba6b/>

## Brussels Times

8 July 2019

[Freedom and captivity in Antarctica: interview with Belgian polar explorer Alain Hubert](#)

<https://www.brusselstimes.com/all-news/belgium-all-news/science/60247/freedom-and-captivity-in-antarctica-interview-with-belgian-polar-explorer-alain-hubert/>

## Cilao Outdoor Blog

17 July 2019

[100 jours en Antarctique sur la station polaire Princess Elisabeth](#)

<https://www.cilao-shop.com/fr/blog/24/100-jours-station-polaire-princess-elisabeth.html>

## Click Verde, NTN24

14 September 2019  
Harriet Hidalgo (director)

[Emisión de gases contaminantes, acidificación y aumento del nivel del mar, fueron altos en el 2018](#)

<https://www.youtube.com/watch?v=-OrLrH3Iz54>

## The Conversation

November 11 2019  
Kate Winter

[Antarctica's first zero emission research station shows that sustainable living is possible anywhere](#)

<https://theconversation.com/antarcticas-first-zero-emission-research-station-shows-that-sustainable-living-is-possible-anywhere-113977>

## Phys.org

11 November 2019  
Kate Winter

[Antarctica's first zero-emission research station shows that sustainable living is possible anywhere](#)

<https://phys.org/news/2019-11-antarctica-zero-emission-station-sustainable.html>

## Northumbria University Newcastle

13 November 2019  
Kate Winter

[Press Release - EXPERT COMMENT - Antarctica's first zero emission research station shows that sustainable living is possible anywhere](#)

<http://newsroom.northumbria.ac.uk/pressreleases/expert-comment-antarcticas-first-zero-emission-research-station-shows-that-sustainable-living-is-possible-anywhere-2943143>

## CleanTechnica

13 November 2019  
Steve Hanley

[100% Wind & Solar Energy At Research Lab In Antarctica](#)

<https://cleantechnica.com/2019/11/13/100-wind-solar-energy-at-research-lab-in-antarctica/>

## ZME Science

13 November 2019  
Fermin Koop

[Life at Antarctica's first zero-emissions research station](#)

<https://www.zmescience.com/science/news-science/antarctica-first-zero-emissions-station/>

## TECH2

14 November 2019  
Kate Winter

[Antarctica's first zero emission research station shows that sustainable living is possible anywhere.](#)

<https://www.firstpost.com/tech/science/antarcticas-first-zero-emission-research-station-proves-living-sustainable-is-possible-anywhere-7649411.html>

## Fast Company

16 November 2019

Kate Winter

Sustainable living lessons from Antarctica's first zero-emission research station

<https://www.fastcompany.com/90429887/sustainable-living-lessons-from-antarcticas-first-zero-emission-research-station>

## FocusTech

16 November 2019

Giacomo Ampollini

La base scientifica in Antartide che produce zero emissioni: un esempio da seguire

<https://focustech.it/2019/11/16/base-scientifica-antartide-emissioni-264517>

## Clean Future

18 November 2019

Roshan

Princess Elisabeth Antarctica Research Station: Powered By 100% Solar & Wind Energy

<http://www.cleanfuture.co.in/2019/11/18/princess-elisabeth-antarctica-research-station-powered-by-100-solar-wind-energy/>

## The Wire

25 November 2019

Kate Winter

Welcome to Antarctica's First Research Station Powered by Green Energy

<https://thewire.in/environment/welcome-to-antarcticas-first-research-station-powered-by-green-energy>

## The Parliament Magazine

26 November 2019

Martin Banks

Climate change 'did not originate' in the Arctic, conference hears

<https://www.theparliamentmagazine.eu/articles/news/climate-change-%E2%80%98did-not-originate%E2%80%99-arctic-conference-hears>

## Météo Media

27 November 2019

Rosalie Dion

La première station de recherche à zéro émission se trouve en Antarctique

<https://www.meteo-media.com/ca/nouvelles/article/la-premiere-station-de-recherche-a-zero-emission-se-trouve-en-antarctique>

## High North News

27 November 2019

Siri Gulliksen Tømmerbank

Tok Arktis med til Brussel: - Spesielt viktig i år, sier EUs ferske ambassadør

<https://www.highnorthnews.com/nb/tok-arktis-med-til-brussel-spesielt-viktig-i-ar-sier-eus-ferske-ambassador>

## Polar Journal

29 November 2019

Michael Wenger

Neue Flugpiste verbindet belgische Station mit der Welt

<https://polarjournal.ch/2019/11/29/neue-flugpiste-verbindet-belgische-station-mit-der-welt/>

## Le Figaro Economie

2 December 2019

En Antarctique, la station Princesse Élisabeth prouve que le «zéro carbone» est possible partout

<https://www.lefigaro.fr/conjoncture/en-antarctique-la-station-princesse-elisabeth-prouve-que-le-zero-carbone-est-possible-partout-20191202>

## France Inter

2 December 2019  
Emmanuel Moreau

[La station polaire Princess Elisabeth Antarctica est la plus propre de toutes](https://www.franceinter.fr/emissions/l-esprit-d-initiative/l-esprit-d-initiative-02-decembre-2019)<https://www.franceinter.fr/emissions/l-esprit-d-initiative/l-esprit-d-initiative-02-decembre-2019>

## High North News

6 December 2019  
Siri Gulliksen Tømmerbakke

[China is the New Buzzword in the Arctic. Some Argue It Is About Time. Others are Tired of Talking About China](https://www.highnorthnews.com/en/china-new-buzzword-arctic-some-argue-it-about-time-others-are-tired-talking-about-china)

<https://www.highnorthnews.com/en/china-new-buzzword-arctic-some-argue-it-about-time-others-are-tired-talking-about-china>

## SMA Sunny

11 December 2019  
Floriane Willems

[Upgrades for emissions-free research station in Antarctica](https://www.sma-sunny.com/en/upgrades-for-emissions-free-research-station-in-antarctica/)

<https://www.sma-sunny.com/en/upgrades-for-emissions-free-research-station-in-antarctica/>

## Le Vif

12 December 2019

[L'Antarctique, plus blanc que blanc](https://www.levif.be/actualite/positif/l-antarctique-plus-blanc-que-blanc/article-normal-1227285.html?cookie_)

[https://www.levif.be/actualite/positif/l-antarctique-plus-blanc-que-blanc/article-normal-1227285.html?cookie\\_](https://www.levif.be/actualite/positif/l-antarctique-plus-blanc-que-blanc/article-normal-1227285.html?cookie_)

## Baugeld Spezialisten

December 2019  
Lukas Kubina

[Leben in der Antarktis: Ein Interview mit Maximo Triolo über neue Freunde, Gletscherspalten und nachhaltige Architektur](https://www.baugeld-spezialisten.de/wohngeschichte/leben-in-der-antarktis/)

<https://www.baugeld-spezialisten.de/wohngeschichte/leben-in-der-antarktis/>



# FINANCIALS 2019

INCOME STATEMENT	2017	2018	2019
	EUROS	EUROS	EUROS
Revenue	8 319 000	4 004 00	3 736 000
Expenses	7 246 000	3 868 00	4 226 000
Excess (Deficit) of the Period	1 073 000	136 00	-490 000

## BALANCE SHEET

Non-Current Assets	2 000	0	0
Current Assets	2 491 000	2 367 000	1 909 000
Total Assets	2 493 000	2 367 000	1 909 000
Equity	1 045 000	1 182 000	652 000
Accruals	239 000	253 613	0
Accounts Payable and Deferred Income	1 209 000	932 000	1 217 000
Total Liabilities	2 493 000	2 362 000	1 909 000



