

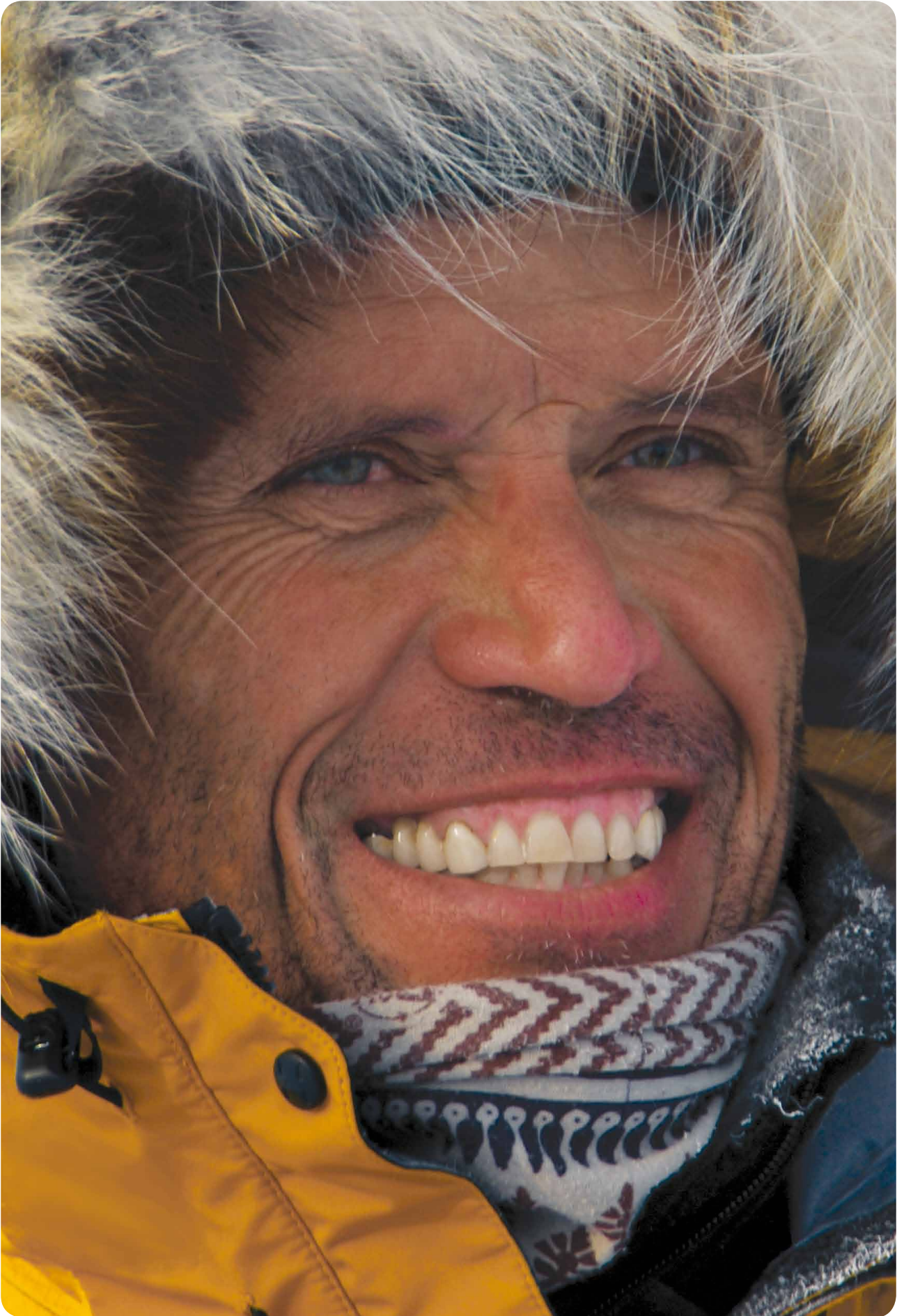
INTERNATIONAL POLAR FOUNDATION



ANNUAL
REPORT
2009

Table of contents

I.	Foreword
II.	The International Polar Foundation Bridging the Science-Society Divide
III.	Structure of the IPF
IV.	Focus of the Year: Class Zero Emission
V.	Activities of the IPF
VI.	The IPF websites
VII.	IPF Publications
VIII.	Attachments



I. Foreword

“Climate change is everywhere, and if humanity is to withstand the potentially catastrophic effects of a globalized alteration of our climate, our society needs to evolve and turn towards more sustainable development.

Only by developing the required intellectual and technical knowledge required; and implementing the adequate administrative and cultural practices, will we be able to ensure a peaceful and fair transition for our carbon-dependent economy to a low CO₂ society.

Through projects such as the Princess Elisabeth Station in Antarctica, the International Polar Foundation has succeeded in demonstrating that technical and logistical challenges could be overcome where there is goodwill and collaboration between people. With the construction of the first ‘zero emission’ in the most hostile environment on Earth, Belgium has taken a resolute step in the right direction.

As the construction of the Princess Elisabeth Station came to an end and the project entered its operations phase, the International Polar Foundation turns to the future with the big endeavor of the Polaris Climate Change Observatory (PCCO). The PCCO will, besides providing the latest scientific knowledge on climate and polar sciences, aim at bringing about a keener appreciation of the role of science, and polar sciences in particular, in understanding the climate dynamics of our planet and designing the innovative solutions to be implemented to safeguard nature’s capital.”

A handwritten signature in black ink, reading "Alain Hubert", followed by a long horizontal line extending to the right.

Alain Hubert, President of the Board of Directors of the IPF

II. The International Polar Foundation Bridging the Science-Society Divide

The International Polar Foundation (IPF) was created with the aim of providing a novel interface between science and society, and was recognized by Belgian Royal Statute as a public utility foundation in 2002. The IPF seeks to bring about a keener appreciation of the role of science, and in particular scientific research in the Polar Regions, through a re-examination of the World, its interlinkages, its fragility and the impact of human actions on the environment and the evolution of millennial climate cycles.

As we advance through the 21st century, the need to find coherent responses to the questions which concern our relationship with the Earth becomes more urgent. The impact of human activities on the finite, fragile biosphere on which we depend for survival has been such that natural cycles are perturbed.

Researchers in the Polar Regions have been actively trying to fill gaps in knowledge to address the uncertainties surrounding the pace, magnitude and direction of change related to global warming. After painstaking research on the polar ice caps of Antarctica and Greenland, evidence was yielded that finally established the causal link between human related carbon dioxide emissions, mean surface temperature, and climate change. Accelerated warming could unlock the billions of tons of fresh water held in these same ice caps, causing sea levels to rise.

The Arctic sea ice, too, has a dual function. Being particularly sensitive to warming trends on the planet, it is an early warning system and a reflective shield that keeps in check any acceleration of the warming process.

In light of the crucial role of the Poles in regulating the heat balance of the Earth, it has become crucial that the scientific effort to understand the mechanisms be sustained and the latest scientific findings be brought into the public domain. To this end, the International Polar Foundation (IPF) has set out to support the efforts of the international scientific community by providing new tools for the dissemination of research findings to the wider public, and by leveraging support for research infrastructure and activities.

Our mission

Inform...

the wider public on the importance of polar research in understanding how the Earth's climate functions as a complex and unified system, and disseminate the results of research on the Polar Regions and on climate change.

Educate ...

by offering to the educational community the tools and resources necessary for efficiently communicating complex ideas through, inter alia, stimulating classroom debate and interaction

Demonstrate ...

by providing examples of best practice with respect to the means for addressing the causes and adapting to the effects of climate change, through exemplary sustainable development initiatives.

III. Structure of the IPF

International Polar Foundation: Honorary President

H.R.H. Prince Philippe of Belgium
Crown Prince of Belgium

International Polar Foundation: Board

Alain Hubert - Founder - Chairman of the Board of Directors
Polar Explorer, Civil Engineer, Certified Mountain Guide

André Berger - Founder
Climatologist, Professor at the Université Catholique de Louvain (Belgium) and former President of the European Geophysical Society

Hugo Declair - Founder
Glaciologist, Professor at the Vrije Universiteit Brussel (Belgium) and Chairman of the Belgian National Committee on Antarctic Research (BNCAR)

Jacques Brassinne de la Buissière - Vice-President
PhD in Political Science
President of the Brussels Museum of Polar History and Exploration

N.F.D. Amin - Vice-President
Environmental Chemist, Global Strategies Director

François-Xavier Huberlant
CEO Airpar

Polaris Centre a.s.b.l./ v.z.w.: Board

Alain Hubert - Chairman
Management Committee

N.F.D. Amin
Management Committee, International Polar Foundation

Jean-Marie De Backer
Partner, De Backer & Associates

Philippe de Baets
Chief Executive, Rolex Benelux

Thierry de Molinari
Chief Executive, CDA

Alain De Waele
Secretary General, InBev-Baillet Latour Funds, President of the « Belgian Team »

Michel de Wouters
Chief Executive, Michel de Wouters Productions

Hugo Ferreira
Assistant General Manager, Compagnie de Trésorerie Benjamin de Rothschild

Bernard Herman

Senior Vice-President, DEXIA BIL

Philippe Maystadt

President, EIB

Pierre Pozzi

Chief Executive Officer, Prefimco S.A.

Marc Speeckaert

Chief Executive Officer, SOFINA

Henri Tassenoy

Management Committee, International Polar Foundation

Luc Willame

President, SDRB

Polaris Centre a.s.b.l.: Management Committee

Alain Hubert

President

N.F.D. Amin

Director External, Legal & Environmental Affairs

Henri Tassenoy

Treasurer

Thierry Touchais

Executive Director

IPF-CH

Laurent Dubois

President

Pierre Dillenbourg

Alain Hubert

IPF-FR

Alain Hubert

President

Nighat F.D Amin

Louis De La Roncière

Arnaud Tortel

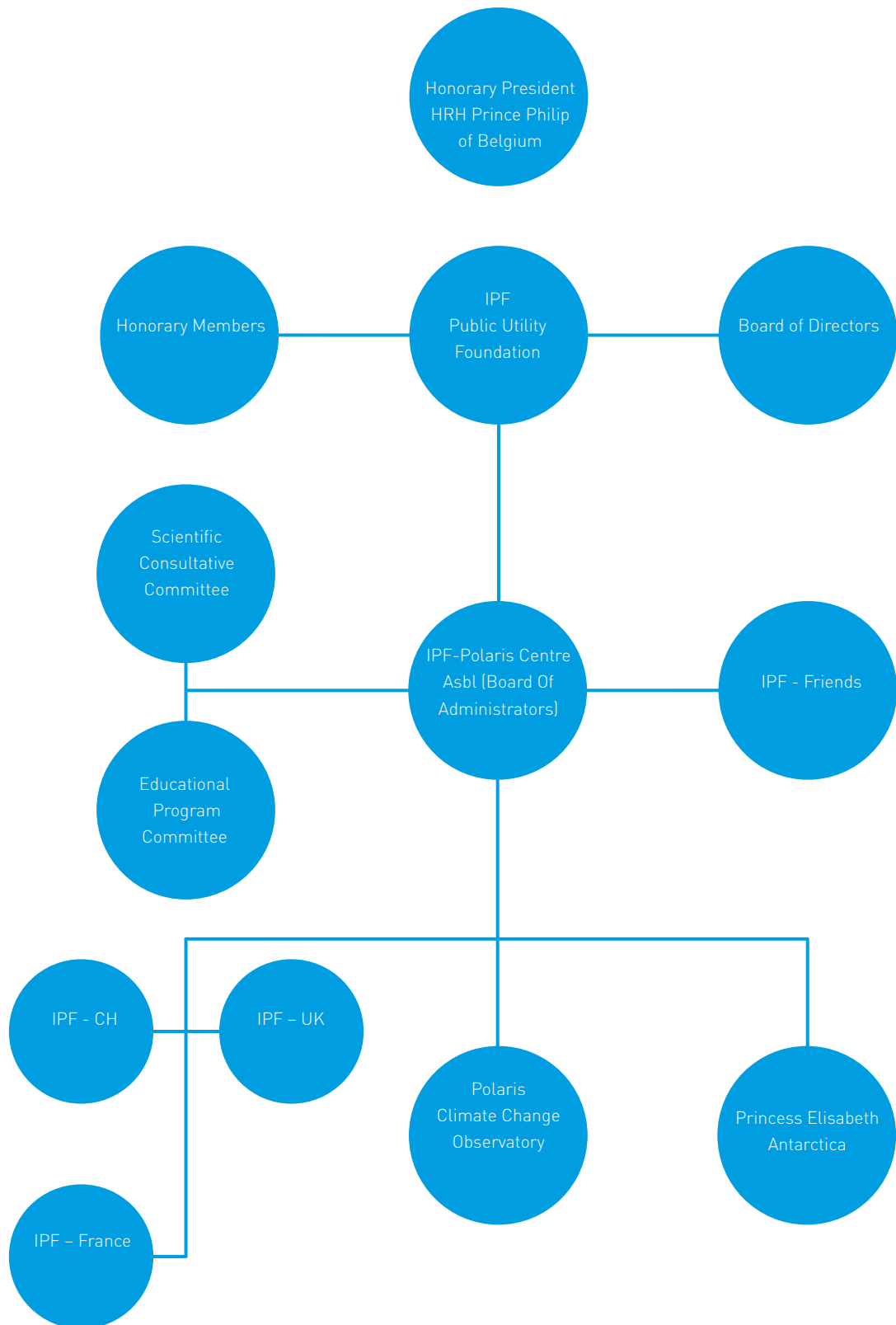
IPF-UK

Sir Andrew Burns

Stephen Cox

Meredith Hooper

Alain Hubert



IV. Focus of the Year: Class Zero Emission



An Innovative Education Program on Climate Change

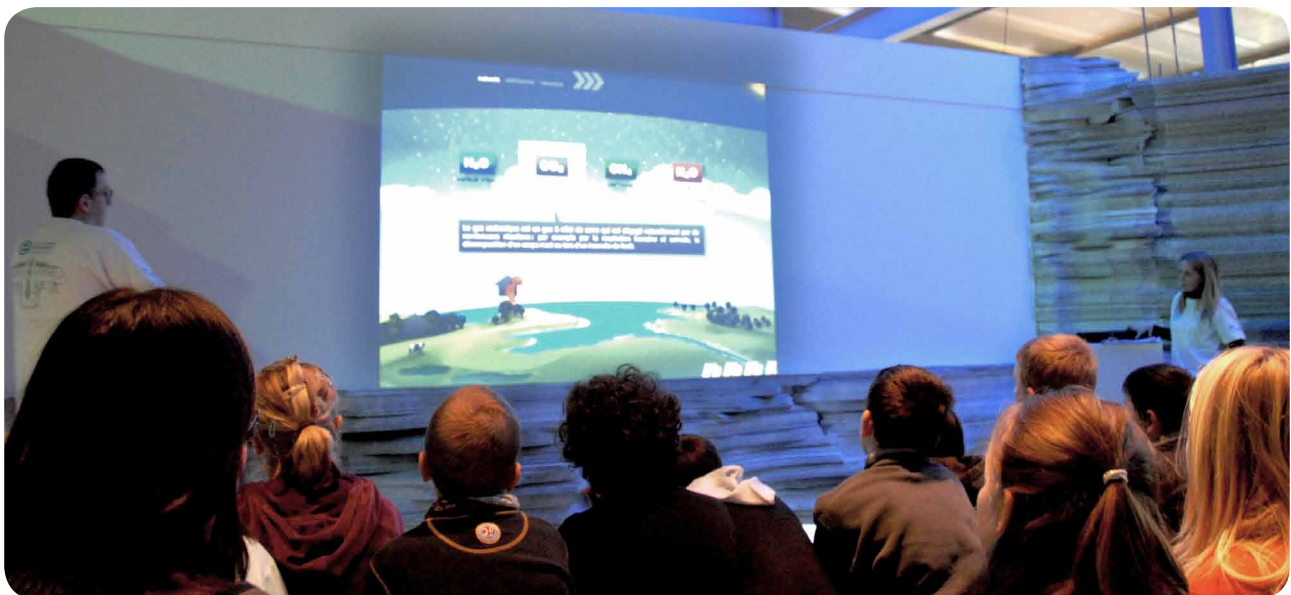
After the inauguration of the Princess Elisabeth Antarctica (PEA) station at Tour & Taxis (Brussels) on September 5th, 2007, and the huge public success of the following open doors days, the International Polar Foundation responded to the emerging demand for PEA related education material and programs by developing a workshop aimed at pointing attendees towards a low carbon emission lifestyle: Class Zero Emission (CZE).

The CZE workshop was created as a national education program with the support of both Belgian Flemish and French communities. It offers pupils from 10 to 18-years old the possibility to get a hands-on approach of the reality of climate change, the purpose of polar sciences, and the need for a sustainable behavior.

As sustainable development is not a standalone part of education curricula, the CZE workshop and education materials were designed as transversal tools allowing teachers to cover multifaceted topics with an angle from their own field of teaching, be it physics, biology, geography, history, economics or chemistry

Four Areas Dedicated to Sciences and Climate

Class Zero Emission revolves around four different spaces, each of which interactively develops an aspect of the Polar Regions, polar sciences and the climate.



'Climate Change' Area

Upon arrival in Class Zero Emission, the visiting classes are immediately immersed in the topic of climate change through strong visuals introducing them to its causes and consequences. Following an explanation of the natural variations of climate on the hand of a timeline representing the alternating glacial and interglacial ages, a focus is drawn on the industrial period between 1850 and the present.



'Polar Regions' Area

From Adrien de Gerlache to Roald Amundsen, Belgian and international polar explorers have played a role in polar research. These explorers are the ones that opened a path to previously unknown territory, and therefore, to research in a former 'Terra Incognita'. Navigation maps from back then offer the classes a glimpse of that era, before an interactive animation around 3D puzzles of the Arctic and Antarctic allows them to discover the poles from a satellite's perspective.

The DAMOCLES exhibition (Developing Arctic Modeling and Observing Capabilities for Long-term Environmental Studies), an FP6 project of the EU, teaches pupils more about the history of the Arctic, while the cave-like exhibition room allows them to relive an Arctic expedition - Arctic Arc - and see the evolution of polar clothing and equipment from the Roi Baudouin Station (1960) to the Princess Elisabeth Station (2010).



'Polar Sciences' Area

In the 'Polar Sciences' area, pupils are invited to trade their explorer boots for a scientist's vest. By conducting experiments linked to polar sciences, the pupils can relate to the work done by polar scientists, and understand

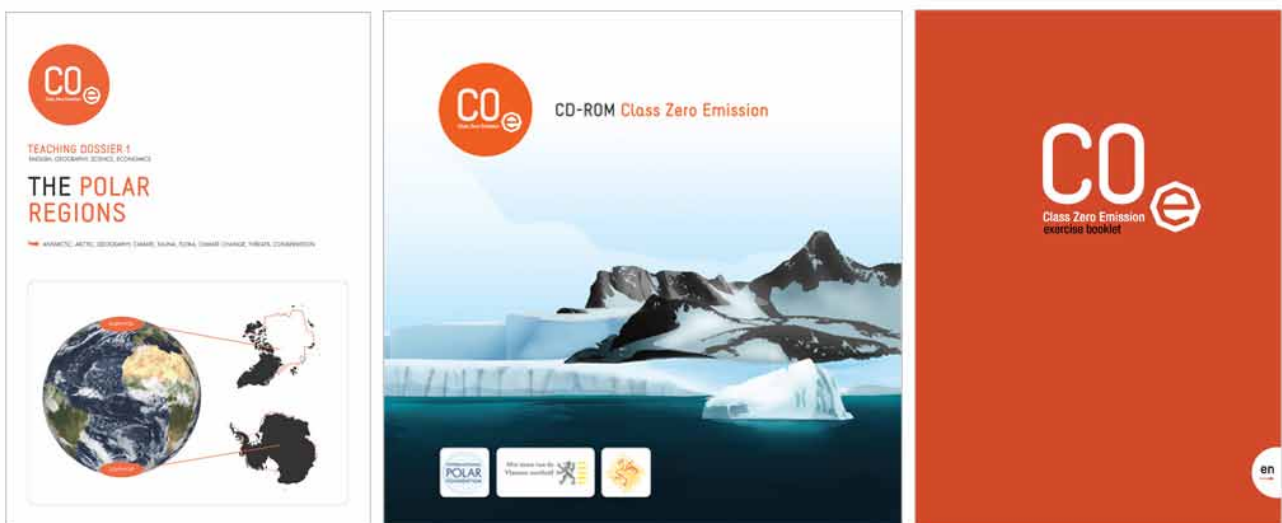
the crucial role of Polar Regions in past climate understanding and global climate regulation. In a transition from the 'Polar Sciences' area to the 'Sustainable Development' area, the Princess Elisabeth Station provides both a workspace and a demonstration of the possible implementations of sustainable development. As a milestone example of energy efficiency applied in the most extreme environment on Earth, the station reminds us that many tools for a "Zero Emission" future are readily available.



'Sustainable Development' Area

As a wrap-up for the CZE workshop, the pupils take part in an interactive quiz, which teaches them how they can contribute to achieving a more sustainable development at their own individual level.

The CZE Educational Tools



In order help teachers prepare the visit to CZE, and allow them to prolong the experience in class, the IPF's education team developed tools such as a CD-ROM, pedagogical dossiers, and an exercise book.

The CD-ROM

The CD-ROM "Class Zero Emission" features 4 interactive flash animations. While the first two animations deal with the effects of the current global warming on the earth and the sea, the two last ones explain how the Polar Regions are the first areas of the planet to be affected by climate change, as well as their role as a laboratory for scientific research on past climates.

The Pedagogical Dossiers

The pedagogical dossiers offer a more in-depth approach of the themes dealt with in the workshop. Their aim is to allow teachers to further discuss the CZE themes in class and prolong the experience. All dossiers feature a theoretical as well as a practical part, including various suggestions for activities that are classified per age group.

The Exercise Book

The CZE exercise book features 15 exercises for pupils aged 10 to 14 and tackles the same four themes as the CZE workshop. The various exercises include fill-ins, games, experiments...

Special Sessions for Teachers and Teacher Trainees

In 2009, the Class Zero Emission workshop successfully broadened its public to include training sessions for teachers and teacher trainees. The aim of these special sessions is to help teachers discuss the CZE themes in class.

Through extending the information, awareness raising and educational aspects to the teachers' community, the IPF aims at providing teachers and teacher trainees with clear and accurate information, interesting tools to educate in an interactive manner, and activities for them to organize in class.

A Tremendous Success

Class Zero Emission was officially inaugurated in 2009 and immediately gained its well-deserved support and popularity among the education communities.

Following the inauguration in March 2009, the International Polar Foundation welcomed 2,665 pupils, from 120 classes of primary, secondary and technical schools to CZE over two full school trimesters.

Feedback on the CZE interactive workshop through a visitor satisfaction questionnaire shows that visiting teachers were unanimous: Class Zero Emission is a success!

V. Activities of the IPF

Princess Elisabeth Antarctica



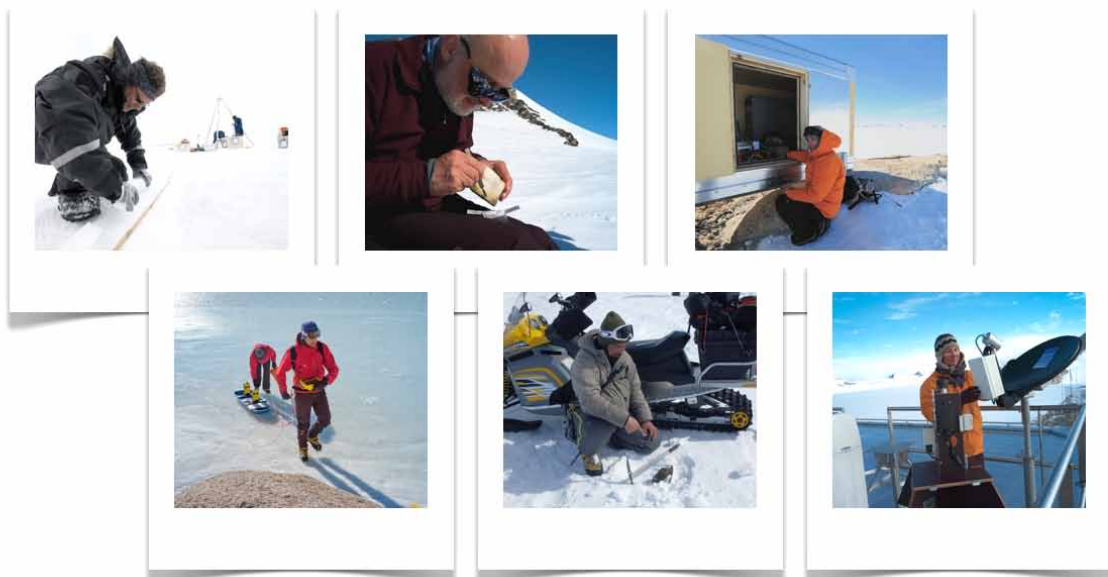
BELARE 2008-2009 and 2009-2010

Following the successful Belgian Antarctic Research Expeditions (BELARE) of 2006-2007 and 2007-2008 for the construction of the Princess Elisabeth station, 2009 saw its epilogue, thus making PEA the only research station to have been completed during the International Polar Year (IPY) 2007-2008.

The Princess Elisabeth Station's inauguration on February 15th, 2009, has placed Belgium back on the Antarctic map with a new and unique research station. A major milestone as the first "zero emission" station ever, the Princess Elisabeth Antarctica, further innovates as the first Antarctic research facility to have been built primarily through private funding. The station, which was successfully completed just in time to celebrate the end of the 4th IPY, was inaugurated in presence of two ministers of the Belgian Federal Government, representatives of the founding and main partners of the project, and an international assembly of journalists. A construction feat and a media success, the Princess Elisabeth Station was covered in 112 print and web media outlets, while the number of visitors on the antarcticstation.org website soared to reach an all-time high.

BELARE 2009-2010 (Nov-Dec 2009) was dedicated to finalizing the integration of the advanced micro smart grid with partners GDF Suez and Schneider Electric, thus making PEA operate in "zero emission". It was also the second scientific season at PEA.

Outline of the Scientific Programs around the Station



Over the course of its two first operational seasons, the Princess Elisabeth Station served as a logistics base for six Belgian and international projects.

BELLISIMA

The BELgian Ice Sheet-Shelf Ice Measurements in Antarctica (BELLISSIMA) project, launched during BELARE 2008-2009 continued in 2009 with the analysis of the collected data.

BELDIVA

The BELgian microbial DIVersity in Antarctica (BELDIVA) project aims at taking an inventory of the microbial diversity (Bacteria, cyanobacteria, algae, lichens, invertebrates) within a 200 km radius of the Princess Elisabeth Station to be compared with the biodiversity found elsewhere in order to better understand the distribution of microorganisms and the factors that influence their distribution.

DELAQUA

DELAQUA (DEglaciation, ice-sheet thickness and climate change in Sør Rondane during the LAte QUaternary) aims at investigating the deglaciation history of the Sør Rondanes and assessing the past biodiversity of microorganisms in the region to reconstruct its climate history over the past 10,000 years.

GIANT

The Geodesy In ANTarctica (GIANT) project combines GPS data, gravimetry and seismology techniques to trace the horizontal and vertical deformation of the Earth's surface with a focus on the relationship between ice mass variation and crust deformation in the Polar Regions.

HYDRANT

The HYDRologic cycle of ANTarctica (HYDRANT) project seeks to understand the current and future evolution of the Antarctic Ice Sheet, especially its contribution to sea-level changes, its surface mass balance, or SMB (sum of precipitation, sublimation, run-off and snowdrift).

JARE 51

As an international research platform, the Princess Elisabeth Station provided logistics and support to the 51st Japanese Antarctic Expedition (JARE 51). After a very successful campaign seeking micrometeorites, the Princess Elisabeth Station will continue serving as a base camp for Japanese teams for their research in geology, geomorphology, geomagnetism and biology in the nearby Sør Rondane Mountains.

Communication on the Princess Elisabeth Station

The IPF's communication around Princess Elisabeth Antarctica revolves around coverage on both the antarcticstation.org and sciencepoles.org websites, as well as the activities prepared for educapoles.org and the Class Zero Emission interactive workshop by the education team of the IPF.

In terms of press material, the communication around the Princess Elisabeth Station includes 12 press conferences and 20 press releases covering the various phases, from the first steps of the construction, through 2009.

Princess Elisabeth, the new "zero emission" station, was covered in at least 49 countries, being featured at least 580 times in Belgium, and 303 times outside of Belgium. Princess Elisabeth Antarctica appeared on 34 international news broadcasts, including Euronews, Al-Jazeera, or the BBC.

Visits to Princess Elisabeth Antarctica

On January 19th, 2009, HSH Prince Albert II of Monaco, on a wide Antarctic Expedition to bring about a keener appreciation of the research carried out there, visited the Princess Elisabeth Station. While still under construction, the station's "Zero Emission" concept appealed strongly to the Prince who explained that "[s]aving energy is what is extraordinary here, constructing a self-sufficient building that is efficient, low on energy and rational."

The Princess Elisabeth Station further welcomed a VIP delegation of Russian Members of Parliament headed by Professor Arthur Chilingarov, a polar explorer, scientist, and member of the Duma; and a Norwegian Environmental Inspection Team, which was to report to the Antarctic Treaty Consultative Meeting on the "zero emission" station's compliance with the regulations of the Antarctic Treaty.

The International Polar Year IPY 2007-2008 (March 2007 – March 2009)

IPF in the Education and Outreach Committee of the IPY

Throughout the 4th IPY, the IPF has been a major contributor to the Education & Outreach Committee of the International Polar Year Office. Upon closure of the IPY, in February 2009, the decision was taken to convene a meeting in Oslo 2010 to further review the scientific outcome of the IPY-endorsed programs and their educational potential.

IPF at the IPY closing ceremony in Geneva

The International Polar Foundation directed and produced "Beyond the Poles" as the only WMO and ICSU official movie for the closing ceremony of the 4th IPY. It premiered at the World Meteorological Organization (WMO) in Geneva (Switzerland) and has been screened throughout the year to WMO visitors with great response. The movie offers a closer look at some of the polar research projects carried out across the globe throughout the IPY and a wider perspective into the future of our planet.

IPF's Sciencepoles.org featured as a reference on the IPY website

Within the framework of the 2007-2008 IPY, the International Polar Foundation's Sciencepoles.org was one of the reference sources featured on the homepage of the International Polar Year, contributing to the RSS feeds and various articles.

50th Anniversary of the Antarctic Treaty

The 32nd Antarctic Treaty Consultative Meeting (ATCM) celebrated the 50th Anniversary of the Antarctic Treaty. At this event Ms. Nighat Amin, Vice-President of the IPF, introduced the international public to the different innovative achievements of the Princess Elisabeth Station. A screening of the IPF's "Aiming for 'Zero Emission'", which positions the project at large within the historical context of Belgium's presence in Antarctica, preceded the special presentation.

During the event, warm congratulations were given to President of the International Polar Foundation and Director of the Princess Elisabeth Station Antarctica project, Alain Hubert, "whose energy and determination transformed this project into reality."

Damocles over Europe

DAMOCLES (Developing Arctic Modeling and Observing Capabilities for Long-term Environmental Studies) is a EU project for an integrated ice-atmosphere-ocean monitoring and forecasting system designed for observing, understanding and quantifying climate change in the Arctic. It represents the integrated efforts of 45 European research institutions and is coordinated with the USA, Canada and Japan.

As a partner of DAMOCLES, the IPF developed a mobile exhibition to communicate on the actions of the project. This mobile exhibition, which was made available for use in connection with polar information events held in

European countries during the International Polar Year 2007-08 (IPY), closed its tour with two stops in 2009: the University of Luxembourg (Dec 2008 – Feb 2009) and Class Zero Emission, where it will stay until August 2011.

Overview of Forums, Symposiums, and conferences Participation

Over the course of 2009, the IPF participated in numerous conferences, symposiums, and forums, as well as in various events to bring all stakeholders to action at several levels: individual, community, academia, corporate, political and administrative, public at large.

Seeking to contribute significantly to climate change policy making, the International Polar Foundation participated in various high profile events such as the European Polar Summit (June 2009), Friends of Europe's European Policy Summit (June 2009) or the European Economic and Social Committee (EESC): Save It! (September 2009).

In accordance with its mission to provide a novel interface between science and society, the IPF further took part in several conferences among which the Printemps des sciences (March 2009), the Arctic Transform Conference (March 2009), or Greenweek (June 2009).

In addition to these events, the International Polar Foundation further participated in several IPY related events such as the IPY Closing Ceremony held in Geneva. As a prominent member of the Education and Outreach Committee of the IPY, the IPF was selected to provide the official movie "Beyond the Poles".

Awards and Prizes Received in 2009

Harvard Leadership Prize

The Harvard Leadership Award for the year 2009 was awarded to IPF President Alain Hubert for his legacy by the Harvard Club of Belgium. The prize is awarded each year to an individual or organization which embodies Harvard University's values and has made significant economical, cultural, scientific or socio-political impact on society.

The International Polar Foundation (IPF) was recognized by the Leadership Prize to have provided a "means to address climate change" through its "innovative and scientific approach" to address the issue of climate change and encourage society to become involved.

Honorary Doctorate of the University of Hasselt

On May 28th, the University of Hasselt (Belgium) awarded an honoris causa-degree to Alain Hubert, founding President of the International Polar Foundation and author of the Princess Elisabeth Station project in Antarctica, for demonstrating "how existing scientific knowledge can foster rational solutions in facing today's social challenges."

Green Good Awards for Foundations

Having designed and built the Princess Elisabeth Station in Utsteinen, Antarctica to operate solely on renewable energies in the most demanding conditions on earth, the International Polar Foundation was awarded the 2009 Green Good Design Award for Foundations by the Chicago Athenaeum: Museum of Architecture and Design, and the European Centre for Architecture Art Design and Urban Studies.

IPY Certificate of Appreciation

The World Meteorological Organization (WMO) and the International Council for Science (ICSU) awarded the International Polar Foundation's President, Mr. Alain Hubert, and Vice-President, Ms. Nighat Amin, with a certificate of appreciation.

With its numerous valuable contributions throughout the International Polar Year 2007-2008, the IPF has significantly helped to make it a success and an enduring example of international collaboration.

VI. The IPF Websites

Polarfoundation.org

Polarfoundation.org is the International Polar Foundation's main website. The website, which is dedicated to communication on the various IPF initiatives, projects, and events, fulfills the IPF's mission as a bridge between science and society.

Polarfoundation.org is directed towards the general public and features movies, flash animations, picture galleries, news items, press releases, and a calendar of events to bring about a keener understanding of the International Polar Foundation's objectives.

Sciencepoles.org

Dedicated to science, the International Polar Foundation's Sciencepoles.org serves as a unique platform for polar research institutions and scientists to communicate on their research. Through scientific vulgarization, the website contributes significantly to the IPF's role as a bridge between science and society.

Targeting policy makers as well as the general public, Sciencepoles.org features:

- daily news updates on recent findings and publications,
- in-depth interviews with prominent members of the polar researchers' community,
- feature galleries on polar environments and research,
- picture galleries of polar landscapes, logistics, and scientific fieldwork,
- a detailed calendar of polar research-related events.

Educapoles.org

Educapoles.org is a website that helps the International Polar Foundation to achieve one of its three key missions: educate. The website, which brings together the IPF's educational and multimedia tools, has the mission to inform the teachers' community, raise awareness of the poles' importance as an early warning system and unique laboratory, and mobilize people by providing the means for them to take action in full knowledge of their implications.

Targeted at teachers, future teachers, and all actors involved in education, Educapoles.org offers pedagogical dossiers, flash animations, videos, picture galleries, tales and ready-made contents such as quizzes, scientific experiments, and classroom activities.

Explorapoles.org

Dedicated to Arctic and Antarctic expeditions, Explorapoles.org uses polar adventures as a means to bring people, and especially younger people's attention to the environmental fate of the Earth and the evolution of the Polar Regions.

Following polar expeditions in the Arctic (from mid-February until the end of June) and the Antarctic (from mid-November until the end of February), Explorapoles.org has already covered hundreds of expeditions and features an updated listing of polar explorers.

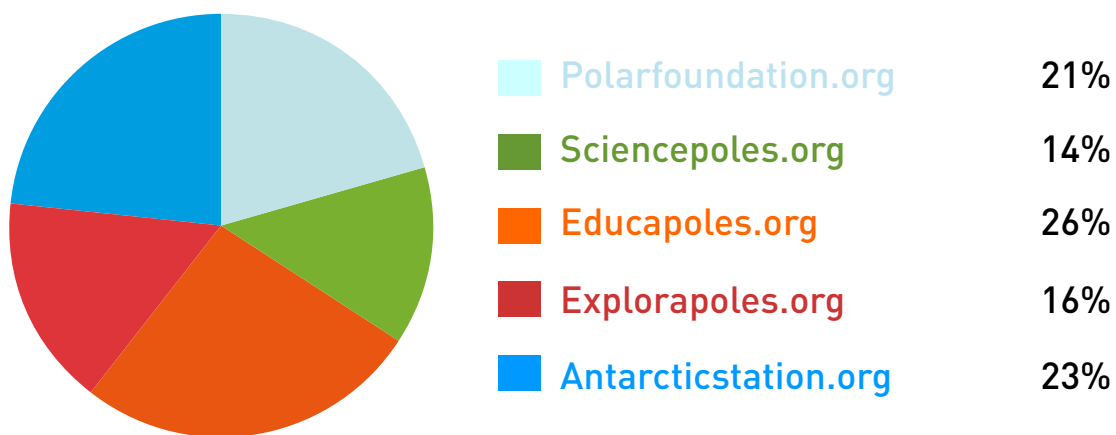
Antarcticstation.org

Antarcticstation.org is dedicated to the International Polar Foundation's flagship project: the Princess Elisabeth Station in Antarctica. The website offers the general public the opportunity to keep in touch with the news and events on Utsteinen Ridge, in Queen Maud Land.

Besides the regular news updates and picture galleries (during the season), Antarcticstation.org features videos, general information on the project, as well as interviews with team members.

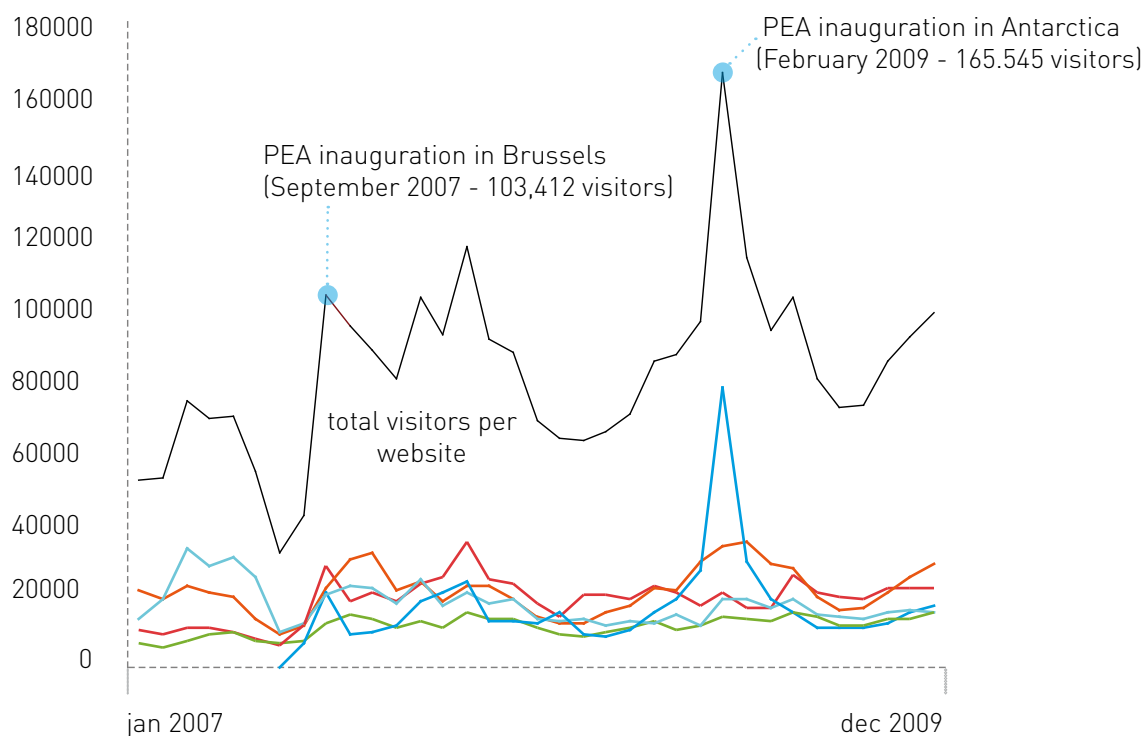
Website statistics

Shares of the websites in the 2009 visitor rates



Total of visitors: 1.072.814

Visitors per websites from January 2007 to December 2009



VII. IPF Publications



The year 2009 was a quite productive year for the International Polar Foundation from a publications point-of-view. While the detailed list of the website publications is included in the attachments of the present annual report, the basic outline of the website publications goes as follows:

- Sciencepoles.org: 37 various interviews and scientific articles
- Educapoles.org: 7 pedagogical dossiers and 13 flash animations

CZE: Pedagogical Dossiers

Within the framework of the interactive workshop 'Class Zero Emission', the IPF's educational team produced several educational and pedagogical tools for teachers to either prepare or continue the "Class Zero Emission" experience in class.

The pedagogical dossiers, which cover various themes such as the Polar Regions, climate change and sustainable development, combine a theoretical part with an overview of the subject, while the practical part offers a wide variety of activities to be conducted in class to familiarize the pupils with the issues tackled in the dossier.

In addition to these pedagogical dossiers, one of the tools that are distributed to the teachers after their CZE visit and made available online for free, the IPF's educational team also produced an exercise book, which was released in French and Dutch. This exercise book, which was developed by the IPF, includes 15 activities for teachers to further tackle the CZE themes in class, and help them cover sustainable development.

Comic Book Heroes Visit the Princess Elisabeth Station

For the 302nd adventure of the renowned Belgian comic Suske en Wiske/Bob et Bobette, entitled 'De Sterrensteen' in Dutch and 'La Météorite Mutagène' in French, the Princess Elisabeth Station welcomes the heroes who travel to Antarctica to solve a mystery.

VIII. Attachments

Sciencepoles Publications

Articles and Interviews

- Steven Goderis: Collecting Meteorites in Antarctica with JARE 51 - 21.12.2009
- CHINARE 26 - 08.12.2009
- The Arctic LTER Project: John Hobbie Discusses Arctic Tundra Ecosystem Research - 26.11.2009
- DAMOCLES Scientists Convene in Brussels - 17.11.2009
- Frank Pattyn on Ice Sheet Models and Ice-ocean Interaction - 05.11.2009
- Lene Kielsen Holm: How Climate Change and Socio-economics Are Affecting Greenland Inuit - 20.10.2009
- Claudio Aporta: Investigating What Canadian Inuit Know about Sea Ice - 12.10.2009
- Igor Krupnik: Documenting Arctic Peoples Knowledge and Use of Sea Ice - 06.10.2009
- Examining Indigenous Sea Ice Knowledge and Use - 05.10.2009
- Martin Siegert: Current Understanding and Ongoing Research of Antarctic Subglacial Lakes - 25.09.2009
- Darrell Kaufman Discusses Methods Used in Studying past Arctic Climate - 16.09.2009
- Darrell Kaufman on Examining the Reverse in the Arctic Cooling Trend - 15.09.2009
- Francesco Frati: What Can the Genetic Makeup of Antarctic Springtails Tell Us? - 01.09.2009
- Karin Lochte on Ocean Acidification and Carbon Sequestering - 21.08.2009
- Karin Lochte on the Work of the Alfred Wegener Institute - 20.08.2009
- Hugh Ducklow: Long Term Ecological Research at Palmer Station - 31.07.2009
- Thomas Puestow on Polar View Meeting User Needs in the IPY and Beyond - 09.07.2009
- Thomas Puestow on the Emergence of Polar View as a Major Player in Earth Observation Services - 08.07.2009
- Karl Erb on US Polar Research Logistics and Policy - 19.06.2009
- Karl Erb on US Participation in the International Polar Year - 18.06.2009
- Eric Wolff: Climate Cycles and Million Year Old Ice - 19.05.2009
- Beata Csatho: Improving Models and Predictions for the Greenland Ice Sheet - 08.05.2009
- Beata Csatho: History and Dynamics of the Greenland Ice Sheet - 06.05.2009
- Igor Krupnik on the Social Sciences in the IPY: The Legacy of the Social Sciences - 22.04.2009
- Igor Krupnik on the Social Sciences in the IPY: Promoting Reciprocity towards Arctic Residents - 17.04.2009
- Angelika Humbert on the Future of the Wilkins Ice Shelf - 08.04.2009
- Paul Mayewski: Climate Variability Abrupt Change and Civilization - 25.03.2009
- Paul Mayewski: The Greenland Ice Sheet Project and the International Trans-Antarctic Expedition - 20.03.2009
- David Carlson on the IPY: Tacking Stock and Looking Forward - 11.03.2009
- Princess Elisabeth Antarctica: A Marvel of Sustainable Development - 06.03.2009
- The State of Polar Research: A Preliminary Report on IPY Research - 26.02.2009
- The LGP: Using the Victoria Land Coast as a Proxy for Climate Change in Antarctica - 19.02.2009
- Shulamit Gordon Discusses the Latitudinal Gradient Project - 19.02.2009
- Inauguration of Kunlun Station at Dome Argus - 06.02.2009
- Jenny Baeseman on APECS an Important Legacy of IPY - 20.01.2009
- Farewell to the Xue Long and Chinare 25 - 08.01.2009
- Interview of Dr. Huigen Yang Director of the Polar Research Institute of China and Leader of CHINARE - 05.01.2009

Educapoles Publications

Pedagogical Dossiers

- CZE Exercise Booklet - 03.08.2009
- Princess Elisabeth Station Antarctica (CZE6) - 08.05.2009
- Sustainable Development: What Is It? (CZE5) - 07.05.2009
- Climate Change: Consequences for the Planet and the Polar Regions (CZE4) - 06.05.2009
- Climate Change: What Is It? (CZE 3) - 21.04.2009
- People in the Polar Regions (CZE2) - 21.04.2009
- The Polar Regions (CZE 1) - 16.02.2009

Flash Animations

- The Polar Regions: One of a Kind Laboratories for Scientific Research - 20.04.2009
- Impacts of Climate Change on the Oceans - 20.04.2009
- The Polar Regions: The First Areas of the Planet to Be Affected by Climate Change - 20.04.2009
- Humankind: Culprit and Victim of Climate Change Today - 20.04.2009
- The passive house - 16.04.2009
- The Princess Elisabeth Station - 01.04.2009
- Biomimicry, draw on inspiration from the living to save energy - 16.03.2009
- Rational use of energy - 03.03.2009
- Collective and individual efforts - 02.03.2009
- Energy consumption today and in the past - 16.02.2009
- The ecological footprint, a measure that induces to better consumption! - 02.02.2009
- Who uses which energy? - 23.01.2009
- Where does the energy we consume come from? - 21.01.2009

CD-ROM

- Class Zero Emission

Financials 2009

Consolidated Income Statement

Euros

Revenue	5 877 797
Expenses	-5 780 002
Result from activities	<u>97 795</u>
Excess from Continuing Operations	130 060
Excess (Deficit) Before Income Tax	142 086
Excess (Deficit) of the Period	133 403

Consolidated Balance Sheet

Euros

Non-Current Assets	18 552
Current Assets	4 023 456
Total Assets	<u>4 042 008</u>

Equity	25 000
Retained Earnings	838 255
Accounts Payable	3 178 753
Total Liabilities	<u>4 042 008</u>

